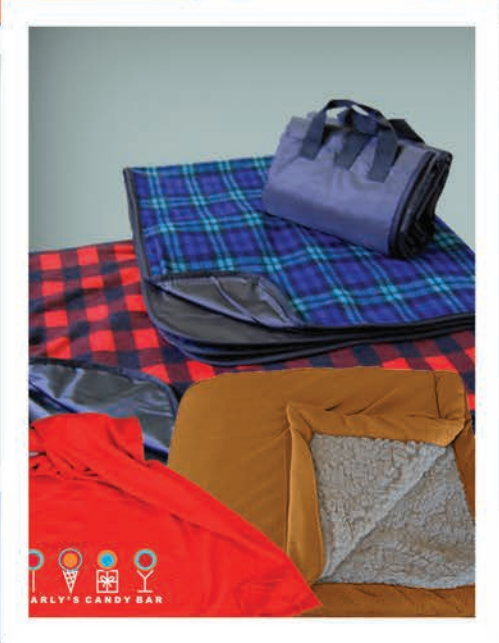
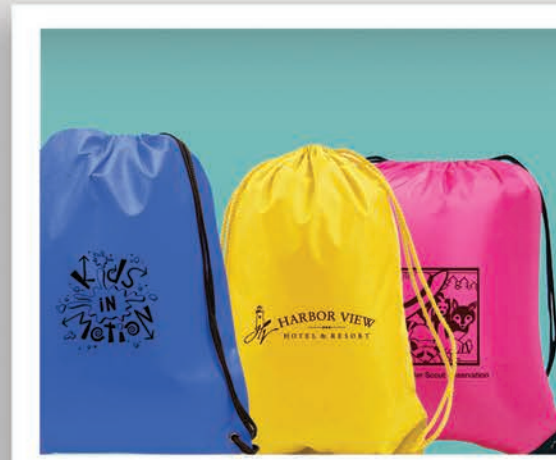


SOUTHERN PLUS



2016





ABOUT US

- ★ 1-18 BAGS
- ★ 19 MORPH SACS
- ★ 20-26 ESPRIT COLLECTION
- ★ 27-28 METROPOLITAN COLLECTION
- ★ 29-35 COOLERS
- ★ 36-39 BLANKETS
- ★ 39 ROBES
- ★ 40 TOWELS
- ★ 41 APRONS
- ★ 42-48 UMBRELLAS
- ★ 49-52 CHAIRS

Since its inception in 1961, Southern Plus has expanded from its original line of umbrellas to other recreational and outdoor-type products for the promotional products industry. The current product lines include: umbrellas, chairs, cooler bags, tote bags, duffels, blankets, picnic ware, and tailgating items. With a focus on product development, Southern Plus has become a trendsetter in these categories, bringing a retail designer look to the promotional products industry. We continually strive to provide cutting edge marketing tools and a user-friendly website to make doing business with Southern Plus as easy as possible.

PRODUCT DESIGN

- ▶ We continue to blend what is hot in the fashion and retail markets with what works for our industry, ensuring new fresh product ideas that you can present to your clients.

PRODUCT SAFETY

- ▶ Southern Plus is one of only 100 suppliers in the industry to be an early adopter of the PPAI Product Safety Awareness Program. We take product safety seriously.

CUSTOM PRODUCTION

- ▶ With our production experience your imagination is the only limitation. Tell us what you want or ask us to bring you design ideas. Whether you just want a custom color on a stock item or a completely unique product design, we can make sure your customers' next promotion is tailor made for their needs. Take advantage of considerable cost savings on overseas orders. We will get back to you as soon as 24 hours on most quotes while some special projects may take longer. Please contact us about your custom project needs today!

CUSTOMER SERVICE

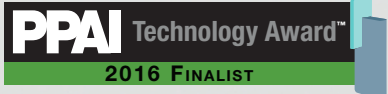
- ▶ With top ratings by all industry associations we aim to become the easiest supplier to work with. Call or email us today to see for yourself!

BI-COASTAL FOB POINTS

- ▶ With the Esprit Collection, Southern Plus now ships from the West Coast also. This collection offers an amazing color range and budget friendly designs.

CUSTOM PRODUCTION

- ▶ Whether you are preparing a Quick Virtual Sample, or Customizing a Sales Flyer for your client(s), our website provides the tools that make this a snap. Our One-Click Catalog enables users to literally flip through the pages of (a digital version of) this catalog. You can upload a logo and have a high-resolution customized virtual catalog in your client's inbox in about a minute. This logo will be visible on every item in our catalog. Searching for the perfect customized promotional items has never been quicker or easier. Try our Idea Generator area to uncover the ideal item(s) in our line for your project.





7076 Santorini Tote

Whether you are shopping South Street Seaport or are poolside at a posh resort, this tote fits the bill. It combines natural fibers with earthy tones to create a simply elegant look. Perfect for shopping, travel, beach or pool. 10 oz cotton upper with raw jute bottom. Thick cotton rope handles.

- ▶ Color: Natural
- ▶ Dimensions: 15"H x 18"W x 5"D
- ▶ Imprint area: 10"W x 5.5"H on Bottom

QTY:	50	100	250	500	1000
	\$8.75	\$8.32	\$7.92	\$7.50	\$7.08
					5R

7078 EASY BREEZY TOTE

This large, lightweight, dura-mesh tote has a front pocket for a smooth imprint area and for holding extra accessories. Perfect for the beach, shopping, or travel (security friendly). Nylon mesh with 600D poly.

- ▶ Color: Red, Royal, Yellow, Lime
- ▶ Dimensions: 20"W x 15"H x 5"D
- ▶ Imprint area: 5.5"W x 5.5" H



QTY:	50	100	250	500	1000
	\$7.08	\$6.65	\$6.25	\$5.83	\$5.42
					5R



7068 THE EDUCATOR

Pockets galore for supplies and papers and all that a day's worth as an educator requires. Plenty of room for the taking home student papers also for those long evenings of grading. 600D poly. Large open main compartment. Front pocket and two side pockets, one open mesh and one solid. Black fabric on bottom panel and back of tote. Color-coordinated web handles.



- ▶ Colors: Gold, Navy, Red, Royal
- ▶ Dimensions: 16.75"W x 14.5"H x 3.5"D
- ▶ Imprint Size: 5"W x 5"H On Front Pocket

QTY:	50	100	250	500	1000
	\$6.65	\$6.25	\$5.83	\$5.42	\$4.98
					5R

Price Includes:
 One Color Imprint, One Location
 Additional Imprint Colors \$1.20 (p)
 Screen Charges: \$45 (V) per color

7069 FORUM TOTE

The ideal tote for a business or educational forum with a front panel full of organizer pockets and a main compartment to hold material, hand-outs, speeches and notes. 600D poly. Zipper closure on main compartment. Large zippered front pocket features interior organizer. Black accents and shoulder straps.



- ▶ Colors: Red, Royal
- ▶ Dimensions: 14"W x 11.25"H x 3.5"D full gusset
- ▶ Imprint Size: 6"W x 3"H On Front Pocket

QTY:	50	100	250	500	1000+
	\$9.58	\$9.33	\$9.08	\$8.75	\$8.32
	5R				



7070 OSLO TOTE

Its name invokes the unfussy design of Scandinavia and modern city life. 600D poly. Large, zippered main compartment. White piping detail on front frames the imprint area and emphasizes the clean lines of this tote.



- ▶ Colors: Black
- ▶ Dimensions: 16.5"W x 13.75"H x 3.75"D
- ▶ Imprint Size: 6"W x 6"H On Front Pocket

QTY:	50	100	250	500	1000+
	\$6.65	\$6.32	\$5.98	\$5.65	\$5.42
	5R				



7071 CHEVRON TOTE

Create a wave of excitement with this tote. Call it preppy or call it traditional, the Chevron print is right on trend. 600D Poly. Open top to spacious main compartment. Contrasting black shoulder straps with white detailing. The chevron pattern adds fun and modern elegance. A tote that says summer fun all year 'round!



- ▶ Color: Black, Orange, Royal
- ▶ Dimensions: 15"W x 15.5"H x 4"D
- ▶ Imprint Area: 9" x 4" on Front

QTY:	50	100	250	500	1000
	\$6.65	\$6.25	\$5.83	\$5.42	\$4.98
	5R				

Price Includes:
 One Color Imprint, One Location
 Additional Imprint Colors \$1.20 (p)
 Screen Charges: \$45 (V) per color



7064 ALUMNI TOTE



A multi-purpose tote for school, work, travel and leisure. 600D Poly with zipper closure. Two side mesh pockets are perfect for water bottles. Large front pocket with additional zippered pocket above. Wide comfortable shoulder straps in grey and pen loop in front. Black and grey accents on front. Back of tote is solid black.

- ▶ Colors: Black, Gold, Hunter, Maroon, Navy, Orange, Red, Royal
- ▶ Dimensions: 19"W x 14.5"H x 3.5"D
- ▶ Imprint Area: 4" x 4" On Front Pocket

QTY:	50	100	250	500	1000
	\$7.08	\$6.83	\$6.50	\$6.17	\$5.83
	5R				

7066 MESH TOTE

An oversize tote with a sleek, modern look. Resin mesh and 70D poly accents and handles. Inside zippered pocket keeps keys and valuables safe. The open mesh is ideal for the beach as well as venues with security concerns. Velcro closure.

- ▶ Color: Black
- ▶ Dimensions: 15"W x 20"H x 6"D
- ▶ Imprint Area: 8"W x 8"W On Front or Back
- ▶ Limit one color imprint

QTY:	50	100	250	500	1000
	\$8.32	\$7.92	\$7.50	\$7.08	\$6.65
	5R				



7062 THE ISLANDER

This versatile carry-all can be used for island hopping or island shopping. Two side pockets for water, cell phone, umbrella, etc. Contrasting bottom panel. Great for tradeshow, travel or shopping. 600D Poly.

- ▶ Colors: Lime, Orange, Pink, Purple, Red, Royal
- ▶ Dimensions: 17"W x 16"H x 3.75"D
- ▶ Imprint Area: 4" x 6" On Front

QTY:	50	100	250	500	1000
	\$6.65	\$6.42	\$6.08	\$5.75	\$5.42
	5R				



7065 VOGUE TOTE

Its quilted design, flat front pocket, and lacquered finish make this a stunning tote. Nonwoven laminated PP.

- ▶ Colors: Black
- ▶ Dimensions: 14"W x 14.75"H x 7"D
- ▶ Imprint Area: 4.5"W x 4"H Front pocket
- ▶ Limit one color imprint

QTY:	100	250	500	1000+
	\$4.17	\$3.92	\$3.58	\$3.32
	4R			

Price Includes:
 One Color Imprint, One Location
 Additional Imprint Colors \$1.20 (p)
 Screen Charges: \$45 (V) per color

BAGS

7053 ZENSATIONAL TOTE

This bag shows enlightenment in its tranquil design. The calm floral pattern and cool color palette make this tote Zensational! Grommet detail on straps, open top. Made of 600D Poly.

- ▶ Colors: Green, Purple, Red, Royal
- ▶ Dimensions: 10.5"W x 11.5"H x 3.5"D
- ▶ Imprint Area: 4" x 5" On Front



QTY:	50	100	250	500	1000
	\$5.98	\$5.82	\$5.65	\$5.48	\$5.32
	5R				



7056 DAMASK TOTE

The preppy look of the damask pattern adds just enough pizzazz to this tote. The matching webbing straps and reinforced seams frame the logo imprint beautifully. A sizeable tote that is suitable for work, shopping or convention. Made of 600D Poly.

- ▶ Colors: Black, Pink
- ▶ Dimensions: 12.5"W x 14.5"H x 4.5"D
- ▶ Imprint Area: 9" x 9" on Front



QTY:	50	100	250	500	1000
	\$5.83	\$5.67	\$5.50	\$5.33	\$4.98
	5R				

7017 NANTUCKET TOTE

As at home with the Cracker Barrel crowd as it is with the Bloomingdale bunch. Tote bag with structured bottom, two tone with ribbon and soft rolled handles. Made of 600D Poly.

- ▶ Colors: Pink, Blue
- ▶ Dimensions: 17"W x 12"H x 7"D
- ▶ Imprint Area: 9" x 3" on Front or back.

QTY:	50	100	250	500	1000
	\$7.48	\$7.32	\$7.15	\$6.92	\$6.65
	5R				



7010 ASCOT TOTE

Padded shoulder straps for extra comfort. Zippered main compartment keeps items secure. 600D Poly and Cotton Canvas trim.

- ▶ Colors: Glacier Blue, Celery Green, Pumpkin Orange
- ▶ Dimensions: 20.5"W x 15"H x 7"D
- ▶ Imprint Area: 3.5" x 5" On Front

QTY:	36	50	100	250	500
	\$12.50	\$12.08	\$11.65	\$11.25	\$10.83
	5R				

Price Includes:
One Color Imprint, One Location
Additional Imprint Colors \$1.20 (p)
Screen Charges: \$45 (V) per color



7040 THE WORKAHOLIC

This mighty tote can be a mobile office, travel companion, or everyday bag. Tote bag has too many pockets to count. Zippered main compartment keeps items secure. Perfect work tote. Made of durable 400D Crinkle Nylon for unique look.



- ▶ Colors: Red, Royal
- ▶ Dimensions: 13.5"W x 15"H x 4.5"D
- ▶ Imprint Area: 3.5" x 4" On front left or right pocket

QTY:	36	50	100	250	500+
	\$13.32	\$12.92	\$12.50	\$12.08	\$11.65
	5R				

7041 THE GETAWAY

Duffel bag is roomy enough for travel and sports but sleek enough for work. Large front zippered pocket and two side pockets. Has carry straps and shoulder strap. Made of durable 400D Crinkle Nylon.

- ▶ Colors: Black, Red, Royal
- ▶ Dimensions: 17"W x 11"H x 8"D
- ▶ Imprint Area: 10" x 4" Front pocket



QTY:	36	50	100	250	500
	\$12.50	\$12.08	\$11.67	\$11.25	\$10.83
	5R				



7042 THE WINDOW SHOPPER

Bag is slouchy and comfortable with large main compartment. Inside pocket, two side pockets and one pocket on back. Crinkle Nylon body makes it virtually indestructible. Reinforced Nylon carry straps.

- ▶ Colors: Red, Pink, Python, Royal
- ▶ Dimensions: 16.5"W x 15.5"H x 7"D
- ▶ Imprint Area: 6"W x 5"H front or back

QTY:	36	50	100	250	500
	\$12.50	\$12.25	\$12.08	\$11.92	\$11.65
	5R				

7008 MONSOON TOTE

The perfect downtown commuter business companion. Weatherproof Nylon bag with reinforced PVC bottom. Zippered main compartment and outside pocket. Perfect for storing a folding umbrella (like our FO-43, sold separately).

- ▶ Colors: Black, Royal
- ▶ Dimensions: 20"W x 16"H x 2.5"D
- ▶ Imprint Area: 6" x 5" on front

QTY:	36	50	100	250	500
	\$7.50	\$7.08	\$6.65	\$6.25	\$5.83
	5R				



Price Includes:
 One Color Imprint, One Location
 Additional Imprint Colors \$1.20 (p)
 Screen Charges: \$45 (V) per color

BAGS



7019 RIVIERA TOTE

Tote bag with heavy rope handles for the nautical look. Features horizontal accent stripes, bottom board, tethered security pouch and magnetic snap closure. Made of 600D Poly. Matching umbrella available.



- ▶ Colors: Black, Red, Yellow, Royal
- ▶ Dimensions: 22"W x 14"H x 8"D
- ▶ Imprint Area: 10" x 4.5" On Front

QTY:	36	50	100	250	500
	\$11.65	\$11.25	\$10.83	\$10.42	\$9.98
	5R				



7063 CORAL LATTICE TOTE

The living sea was our inspiration for this plus-sized bag! Its buoy-like shape, extra-deep size, coral-wrap pattern and contrasting bottom make it "nauti" and nice! Use it from hot tub to yacht club! 600D Poly.



- ▶ Colors: Blue, Red
- ▶ Dimensions: 15"W x 17.5"H x 11.5"D
- ▶ Imprint Area: 9" x 7" on front or back..

QTY:	36	50	100	250	500
	\$8.32	\$7.92	\$7.50	\$7.08	\$6.65
	5R				



7026 TOWN AND COUNTRY TOTE

This colorful tote has a zippered top, structured bottom, padded handles, and two-toned contrast striping to give it a racy look. Features front slip pocket. 600D Poly.

- ▶ Colors: Tan, Yellow, Green, Maroon, Pink, Red, Sky Blue
- ▶ Dimensions: 21"W x 12"H x 8"D
- ▶ Imprint Area: 4.5" x 4" On Front Pocket

QTY:	36	50	100	250	500
	\$9.98	\$9.58	\$9.17	\$8.75	\$8.32
	5R				



7023GM METALLIC SHOPPER TOTE

Add some sizzle with this deluxe shopping tote! Laminated for extra strength. Loop in back holds the bag in place.

- ▶ Colors: Gold Metallic
- ▶ Dimensions: 12"W x 13"H x 6.5"D
- ▶ Imprint Area: 4.5" x 6.5"
- ▶ Black imprint only front or back.

QTY:	50	100	250	500	1000
	\$3.83	\$3.67	\$3.50	\$2.82	\$2.75
	5R				



7015 BALI TOTE

Tote bag with translucent front panel, juicy colors. Features large bag with lots of storage, rope detailing with drawstring. Made of 420D Nylon.

- ▶ Colors: Orange, Green, Red, Yellow
- ▶ Dimensions: 20.5"W x 18"H x 9"D
- ▶ Imprint Area: 12" x 7" On Front

QTY:	36	50	100	250	500
	\$11.65	\$11.25	\$10.83	\$10.42	\$9.98
	5R				

Price Includes:
One Color Imprint, One Location
Additional Imprint Colors \$1.20 (p)
Screen Charges: \$45 (V) per color



4016 ZEBRA DUFFEL

If you travel to exotic places, or simply like to look chic on weekend trips, this large sized deffel will be your best travel companion. Its padded body and piping ensures it keeps its sleek shape while the front zipper pockets are ideal for quick access to your passport, keys or cell phone. Made of 600D Poly.

- ▶ Colors: Black
- ▶ Dimensions: 21"W x 14"H x 9"D
- ▶ Imprint Area: 8" x 2" On Front

QTY:	24	50	100	250	500
	\$18.32	\$17.92	\$17.50	\$17.08	\$16.65
					5R



7057 ZEBRA TOTE

Take a walk on the wild side with this tote in arm! This exotic, zebra print bag has reinforced seams and contrasting black webbing straps that add to the dramatic look. Made of 600D Poly.

- ▶ Colors: Black
- ▶ Dimensions: 12.5"W x 14.5"H x 4.5"D
- ▶ Imprint Area: 9" x 9" On Front

QTY:	50	100	250	500	1000
	\$5.83	\$5.67	\$5.50	\$5.33	\$4.98
					5R



7067 STADIUM TOTE

With full view of content and maximum allowed size this it the tote to bring to the next game! Heavy duty 10M PVC for added strength and durability. Trimmed in contrasting color and matching web handles. Meets NFL requirements.

- ▶ Colors: Black, Red, Royal
- ▶ Dimensions: 12"W x 12"H x 6"D
- ▶ Imprint Area: 4.5"W x 6.5"H Front and Back
- ▶ Limited ink colors available.
- ▶ One color imprint only.

QTY:	50	100	250	500	1000
	\$4.98	\$4.75	\$4.58	\$4.17	\$3.92
					5R



7018 CHINO TOTE

Casual sophistication meets comfort. Fully lined with zippered closure and inside zippered pockry. Two-toned with angled straps with rivited leather accents. 600D poly. Matching bamboo fashion umbrella available.

- ▶ Colors: Blue, Green, Pink
- ▶ Dimensions: 18"W x 12"H x 5"D
- ▶ Imprint Area: 4" x 3" On front

QTY:	50	100	250	500	1000
	\$8.32	\$8.15	\$7.92	\$7.67	\$7.48
					5R



7059 SUMMIT TOTE

A sporty tote that will take you to the top whether you're climbing the corporate ladder or K2. Front zip pocket, wrapped carry handles and shoulder strap. Grommet details and zipper closure. 600D Poly.

- ▶ Colors: Black, Red, Royal
- ▶ Dimensions: 13.5"W x 14.5"H x 5.25"D
- ▶ Imprint Area: 3.5" x 3" On Front

QTY:	36	50	100	250	500
	\$9.17	\$8.75	\$8.32	\$7.92	\$7.50
					5R

Price Includes:
 One Color Imprint, One Location
 Additional Imprint Colors \$1.20 (p)
 Screen Charges: \$45 (V) per color

7054 DEALMAKER TOTE

A perfect work tote with large front zippered pocket, zippered main compartment and side mesh pocket. Double layered fabric handles are extra long to accommodate a heavy load. From the boardwalk to the boardroom, this tote will show who's the boss! Made of 600 denier Poly.

- ▶ Colors: Black, Lime, Orange, Pink, Red, Royal
- ▶ Dimensions: 17"W x 15"H x 4.5"D
- ▶ Imprint Area: 4" x 4" On front pocket

QTY:	50	100	250	500	1000
	\$5.98	\$5.82	\$5.65	\$5.32	\$4.98

5R



7061 DOSSIER

Whether your stuff is top secret or not, this zippered tote will conceal for real, keeping contents secure. Grommet detail on handles, contrasting bottom panel with mesh side pockets. 600D Poly.

- ▶ Colors: Navy, Red, Royal
- ▶ Dimensions: 18"W x 13.5"H x 3"D
- ▶ Imprint Area: 5.5" x 4.5" On front

QTY:	50	100	250	500	1000+
	\$6.32	\$6.00	\$5.67	\$5.33	\$4.98

5R

7004 METRO TOTE

This may be one of the best overall values in our line. Rolled handles for extra comfort. Zippered closure, hard bottom panel. Simple and elegant!

- ▶ Colors: Red, Black, Royal
- ▶ Dimensions: 17.5"W x 12"H x 4"D
- ▶ Imprint Area: 8" x 5" On front.

QTY:	50	100	250	500	1000
	\$6.82	\$6.65	\$6.48	\$6.15	\$5.82

5R



7014 WALLABY TOTE

Features large outside and clear business card pockets. Free insertion of your cards into business card pocket. Great convention tote. 600D Poly.

- ▶ Colors: Black, Royal
- ▶ Dimensions: 14"W x 11"H x 4"D
- ▶ Imprint Area: 4.5" x 5.5" On front pocket

QTY:	50	100	250	500	1000
	\$4.82	\$4.65	\$4.48	\$4.32	\$4.15

5R



Price Includes:
One Color Imprint, One Location
Additional Imprint Colors \$1.20 (p)
Screen Charges: \$45 (V) per color



7025 CLIP-IT TOTE

Portability is king with this plastic bag alternative. Tote folds down into an attached pouch which hooks onto key chain, purse etc. Lightweight but durable in 190T Poly.

- ▶ Colors: Brown, Pink
- ▶ Dimensions: 14.5"W x 16"H x 2.5"D
- ▶ Imprint Area: 9" x 12" On front or back of bag (1) or Extra 1 color imprint on pouch \$2 (P) 2" x 1" (2)

QTY:	50	100	250	500	1000
	\$2.98	\$2.92	\$2.82	\$2.65	\$2.48
	5R				

7430NQ/CQ SPORT PACK

There are very few things that you can't pack with this lightweight cotton on your back. Drawstring backpack with white drawcord. 6oz. cotton.

- ▶ Colors: Chocolate, Forest Green, Turquoise, Red, Royal, Orange, Texas Orange, Maroon, Kelly Green, Lime, Purple, Azalea, Light Pink, Gold, White, Army, Black, Carolina Blue, Navy, Hot Pink, Yellow, Lavender, Natural
- ▶ Dimensions: 14"W x 18"H
- ▶ Imprint Area: 8" x 10" Front or back

QTY:	72	144	300	500	1000
Color	\$4.90	\$3.85	\$3.33	\$3.23	\$3.07
Natural	\$4.62	\$3.57	\$3.05	\$2.95	\$2.78
	5R				



7032 THE WEDGE

Wedged somewhere between backpack and fanny pack! Wedge shaped sling pack with zipper closure and front open pocket. Single padded shoulder strap. 210D Poly.



- ▶ Colors: Orange, Red, Royal
- ▶ Dimensions: 11"W x 16"H x 5"D
- ▶ Imprint Area: 2.75" x 3.75" Front Pocket

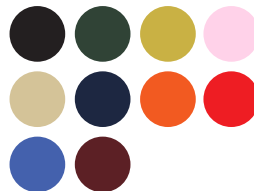
QTY:	50	100	250	500	1000
	\$4.00	\$3.83	\$3.67	\$3.50	\$3.32
	5R				

7500CQ DRAWSTRING BACKPACK

Backpack with full size front zippered pocket. Durable 210D Poly. Color-matched reinforced corners and drawstring for a sleek look.

- ▶ Colors: Black, Forest, Gold, Pink, Maroon, Natural, Navy, Orange, Red, Royal, White
- ▶ Dimensions: 15"W x 18.75"H
- ▶ Imprint Area: 6" x 8" On Front

QTY:	72	144	300	500	1000
	\$3.42	\$3.22	\$3.13	\$2.95	\$2.78
	5R				



Price Includes:
 One Color Imprint, One Location
 Additional Imprint Colors \$1.20 (p)
 Screen Charges: \$45 (V) per color



7050 FIESTA TOTE

Eco friendly tote with a twist. Floral pattern, contrasting bottom and handles, and faux stitching detail adds fun to being green. 90 gsm non-woven PP.



- ▶ Colors: Red, Black, Lime Green, Yellow, Royal
- ▶ Dimensions: 17.5"W x 15"H x 11.5"D
- ▶ Imprint Area: 8" x 7" Front or back.

QTY:	50	100	250	500	1000
	\$4.58	\$4.42	\$4.25	\$4.08	\$3.92

5R

7022 CONTOUR TOTE

Fashionable, clever, portable, recyclable. Unique design folds down and snaps closed. Pocket feature is great for couplons or business cards. Nonwoven PP.

- ▶ Colors: Green, Pink, Black, Orange, Yellow, Royal
- ▶ Dimensions: 15"W x 15"H x 8.5"D
- ▶ Imprint Area: 5" x 7" front or back (1) or bottom pocket 4" x 2.25" (2).



QTY:	50	100	250	500	1000
	\$3.83	\$3.67	\$3.50	\$2.82	\$2.75

5R



7013 ENCORE TOTE

Piping details and two-tone design adds fashion flair to this generously sized tote. Perfect for tradeshow and conventions. Nonwoven PP.



- ▶ Colors: Pink, Yellow, Lime
- ▶ Dimensions: 17"W x 16"H x 2.5"D
- ▶ Imprint Area: 9" x 7"

QTY:	50	100	250	500	1000
	\$2.32	\$2.25	\$2.17	\$2.08	\$1.98

5R

7023 SHOPPER TOTE

A nonwoven PP shopping tote with bottom panel for added structure and strength. Carry straps wrap around for the whole bag for extra support.

- ▶ Colors: Black, Gray, Kelly Green, Light Pink, Lime, Navy Blue, Orange, Purple, Red, Royal, Yellow
- ▶ Dimensions: 12"W x 13"H x 6.5"D
- ▶ Imprint Area: 4.5" x 7"

QTY:	100	250	500	1000
	\$2.00	\$1.83	\$1.75	\$1.65

4R



Price Includes:
One Color Imprint, One Location
Additional Imprint Colors \$1.20 (p)
Screen Charges: \$45 (V) per color

7073 SOMERSET TOTE

Colored Jute fabric with natural Juco front panel is both fashionable and functional. The Juco (Jute Cotton blend) fabric's smoother texture allows more detailed imprint. A large rectangular main compartment is ideal for heavy loads of brochures and paperwork while the soft, rolled handle provides comfort.



- ▶ Color: Black, Orange, Red, Royal
- ▶ Dimensions: 16"W x 13.5"H x 7"D
- ▶ Imprint Area: 8" x 6" on Front

QTY:	50	100	250	500	1000
	\$7.08	\$6.92	\$6.75	\$6.58	\$6.25

5R



7072 MENALI TOTE

Raw, non-coated jute gives this tote its rugged appeal. The course weave is durable, yet soft. As natural as it comes! Soft cotton webbing in natural with contrasting black stripe.



- ▶ Colors: Natural
- ▶ Dimensions: 17.5"W x 17"H x 3"D
- ▶ Imprint Area: 5" x 5" On Front or Back of Tote

QTY:	50	100	250	500	1000
	\$7.08	\$6.92	\$6.65	\$6.25	\$5.83

5R



7074 CALYPSO BAG

If your favorite color is stripes, this Cotton Canvas tote is for you. The tote's caribbean colors are perfect for any beach destination but its cool vibe also makes it ideal for carrying your latest flea market or record store find!

- ▶ Colors: Multi
- ▶ Dimensions: 19.5"W x 16"H x 4"D
- ▶ Imprint Area: 8" x 3" On Front

QTY:	50	100	250	500	1000
	\$9.15	\$8.75	\$8.32	\$7.92	\$7.50

5R



7075 HORIZON TOTE

Colored jute accents and Juco body is the framework for this beautifully crafted bag. The rope handle with wrapped loop attachment adds another natural element while the piping detail at the bottom provides structure and an elegant finish. Take this tote to work or the beach - not necessarily in that order.



- ▶ Color: Black, Lime, Red, Royal
- ▶ Dimensions: 19"W x 12.5"H x 6"D
- ▶ Imprint Area: 9" x 5" on Front

QTY:	50	100	250	500	1000
	\$9.58	\$9.33	\$9.08	\$8.75	\$8.32

5R

Price Includes:
 One Color Imprint, One Location
 Additional Imprint Colors \$1.20 (p)
 Screen Charges: \$45 (V) per color

BAGS

7029 MARKET TOTE

Extra large jute bag, laminated for extra strength. Long, padded, comfortable handles. Eco friendly and fashionable. Great shopping tote. Jute has anti-bacterial properties, is a renewable resource, and is recyclable.

- ▶ Colors: Black, Orange, Pink, Lime Green, Royal
- ▶ Dimensions: 18"W x 15"H x 5"D
- ▶ Imprint Area: 10" x 7" Front or back

QTY:	50	100	250	500	1000
	\$6.98	\$6.82	\$6.58	\$6.42	\$6.25
	5R				



7052 COLIBRI TOTE

How cute is this jute! The natural eco-friendly fabric is strong and wholesome while the smaller size makes it ideal for resorts, spas, and conventions. Soft, rope handles add to the upscale look of this bag.

- ▶ Colors: Black, Pink, Blue, Green, Orange
- ▶ Dimensions: 12"W x 9.5"H x 4.5"D
- ▶ Imprint Area: 9" x 6" on front or back.

QTY:	50	100	250	500	1000
	\$4.98	\$4.82	\$4.65	\$4.48	\$4.32
	5R				



7058 MAYA TOTE

Go natural with this 100% Jute tote. Laminated for added strength and easy cleaning. Cotton striped webbing gives this eco-friendly tote an upscale look. Great for shopping and tradeshows.

- ▶ Colors: Red, Black, Royal
- ▶ Dimensions: 16"W x 11"H x 5"D
- ▶ Imprint Area: 3.5" x 6" Front or back

QTY:	36	50	100	250	500
	\$6.65	\$6.32	\$5.98	\$5.65	\$5.42
	5R				



7060 SHANTI TOTE

Jute tote with inside laminated for strength. Contrasting Cotton webbing handles. Simple, natural, elegant.

- ▶ Colors: Glacier Blue, Berry Purple, Brown
- ▶ Dimensions: 11"W (bottom) x 11.5"H x 4"D
- ▶ Imprint Area: 5" x 7" Front or back

QTY:	50	100	250	500	1000
	\$4.98	\$4.82	\$4.65	\$4.48	\$4.17
	5R				



Price Includes:
One Color Imprint, One Location
Additional Imprint Colors \$1.20 (p)
Screen Charges: \$45 (V) per color



7011 CAMPUS TOTE

The cutting edge Cotton canvas tote bag with washed finish and frayed edges. Front pocket, Cotton webbing straps and aged brass hardware and grommet details. Made of 100% Cotton canvas.

- ▶ Colors: Green Tea, Slate, Cotton Candy Pink, Burlap Khaki
- ▶ Dimensions: 17"W x 14"H x 3"D
- ▶ Imprint Area: 4.5" x 3" on front pocket

QTY:	36	50	100	250	500+
	\$13.32	\$12.92	\$12.50	\$12.08	\$11.65
	5R				

7055 LUNA TOTE

Super strong and extra long jute strap slings over the shoulder for added security and comfort. 10 oz. natural Cotton body provides an extra large canvas for decorating. Load up with books or fresh produce - it holds it all.

- ▶ Colors: Natural
- ▶ Dimensions: 14"W x 17"H x 2.25"D
- ▶ Imprint Area: 9" x 9" on front or back

QTY:	36	50	100	250	500
	\$8.32	\$8.08	\$7.75	\$7.42	\$7.08
	5R				



7028 WOODSTOCK TOTE

60% Jute blended with 40% Cotton makes this the natural choice. Environmentally friendly; made from renewable resource. Extremely durable and mold resistant. The rugged texture makes it ideal for concerts, festivals, or farmers markets.

- ▶ Colors: Natural
- ▶ Dimensions 15.25"W x 15"H x 4"D
- ▶ Imprint Area: 10" x 8" on front or back

QTY:	50	100	250	500	1000
	\$7.48	\$7.32	\$7.08	\$6.65	\$6.25
	5R				

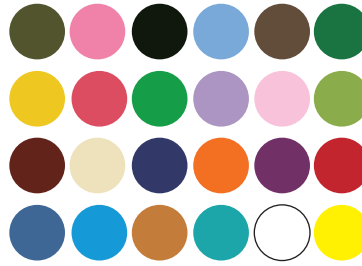


Price Includes:
 One Color Imprint, One Location
 Additional Imprint Colors \$1.20 (p)
 Screen Charges: \$45 (V) per color

7401NQ AND 7401CQ RAINBOW TOTE

This tote comes in every color under the rainbow plus a few more!
6 oz. 100% Cotton. Self-fabric handles. Light weight, easy to print.
Great for tradeshow giveaways, fundraising, event tote, shopping tote.

- ▶ Colors: Army, Azalea, Black, Carolina Blue, Chocolate, Forest Green, Gold, Hot Pink, Kelly Green, Lavender, Light Pink, Lime, Maroon, Natural, Navy, Orange, Purple, Red, Royal, Sapphire, Texas Orange, Turquoise, White, Yellow
- ▶ Dimensions: 15"W x 16"H
- ▶ Imprint Area: 10" x 12" on front or back



QTY:	72	144	300	500	1000
COLOR:	\$4.67	\$3.67	\$3.17	\$3.08	\$2.92
NATURAL:	\$4.28	\$3.28	\$2.78	\$2.70	\$2.53

5R



7404CQ AND 7404NQ CRUISE TOTE

This bag's perfect from ship to shore. 12 oz. Cotton canvas zippered, shopping tote with 22" handle and outside zippered pocket.

- ▶ Colors: Black, Natural, Navy, Red, Royal
- ▶ Dimensions: 18"W x 14"H x 4.5"D
- ▶ Imprint Area: 5.5" x 4" on front pocket

QTY:	72	144	300	500	1000
COLOR:	\$8.23	\$7.23	\$6.73	\$6.65	\$6.48
NATURAL:	\$7.67	\$6.67	\$6.17	\$6.08	\$5.92

5R

7402CQ HANDLE ANYTHING TOTE

22 Different colored handles to choose from will certainly complement any logo. Natural body. 6 oz. 100% Cotton. Self-fabric handle.

- ▶ Colors: Army, Azalea, Black, Carolina Blue, Chocolate, Forest Green, Gold, Hot Pink, Kelly Green, Lavender, Light Pink, Lime, Maroon, Navy, Orange, Purple, Red, Royal, Sapphire, Texas Orange, Turquoise, Yellow
- ▶ Dimensions: 15"W x 16"H
- ▶ Imprint Area: 10" x 12" Front or back

QTY:	72	144	300	500	1000
	\$4.50	\$3.50	\$3.00	\$2.92	\$2.75

5R



7403CQ CUTTING EDGE TOTE

Outlines your name like a picture frame. 6 oz. 100% Cotton canvas tote. Fancy web handles are padded for comfort. Full side and bottom gusset. Colored piping frames decorating space for added appeal.

- ▶ Colors: Black, Chocolate, Light Pink, Lime, Navy, Red, Royal
- ▶ Dimensions: 15"W x 16"H x 6"D
- ▶ Imprint Area: 10" x 12" on front or back

QTY:	72	144	300	500	1000
	\$6.73	\$5.73	\$5.23	\$5.15	\$4.98

5R



Price Includes:
One Color Imprint, One Location
Additional Imprint Colors \$1.20 (p)
Screen Charges: \$45 (V) per color



7406CQ AND 7406NQ BOAT TOTE

12 oz. Large canvas deluxe shopping tote with 22" handles and interior zippered pocket.

- ▶ Colors: Black, Chocolate, Light Pink, Maroon, Natural, Navy, Red, Royal
- ▶ Dimensions: 22"W x 16"H x 6"D
- ▶ Imprint Area: 5.5" x 4" On front pocket

QTY:	72	144	300	500	1000
COLOR:	\$10.17	\$9.17	\$8.67	\$8.58	\$8.42
NATURAL:	\$9.73	\$8.73	\$8.23	\$8.15	\$7.98

5R



7407CQ TRIPLE BAND TOTE

12 oz. cotton canvas tri-color promotional tote bag. Natural strap.

- ▶ Colors: Black-Natural-Light Gray, Chocolate-Natural-Khaki, Forest Green-Natural-Khaki, Purple-Natural-Lavender, Navy-Natural-Carolina Blue, Maroon-Natural-Light Pink
- ▶ Dimensions: 15"W x 15"H x 3"D
- ▶ Imprint Area: 9" x 3" Front or Back

QTY:	72	144	300	500	1000
COLOR:	\$6.17	\$5.17	\$4.67	\$4.58	\$4.42

5R



7409NQ AND 7409CQ CANVAS JUMBO TOTE BAG

12 oz. Cotton canvas with squared off bottom. Extra long web handles. Reinforced at stress points for added strength.

- ▶ Colors: Black, Natural, Navy, Red, Royal
- ▶ Dimensions: 20"W x 15"H x 5"D
- ▶ Imprint Area: 12" x 10" Front or Back

QTY:	72	144	300	500	1000
COLOR:	\$6.40	\$5.40	\$4.90	\$4.82	\$4.65
NATURAL:	\$5.90	\$4.90	\$4.40	\$4.32	\$4.15

5R



7411NQ AND 7411CQ CANVAS SPORT BACKPACK

12 oz. Cotton canvas, self-fabric adjustable straps sport backpack.

- ▶ Colors: Black, Chocolate, Light Pink, Maroon, Natural, Navy, Red, Royal
- ▶ Dimensions: 14"W x 18"H x 2"D
- ▶ Imprint Area: 8" x 10" On front

QTY:	72	144	300	500	1000
COLOR:	\$6.57	\$5.57	\$5.07	\$4.98	\$4.52
NATURAL:	\$6.23	\$5.23	\$4.73	\$4.65	\$4.48

5R



7408NQ AND 7408CQ PROMOTIONAL TOTE BAG

12 oz. Cotton canvas tote bag with web handles and reinforced at stress points.

- ▶ Colors: Black, Chocolate, Light Pink, Lime Green, Navy, Red, Royal, White, Yellow, Natural
- ▶ Dimensions: 15"W x 16"H
- ▶ Imprint Area: 10" x 12" on Front or back

QTY:	72	144	300	500	1000
COLOR:	\$5.23	\$4.23	\$3.73	\$3.65	\$3.48
NATURAL:	\$4.83	\$3.83	\$3.33	\$3.25	\$3.08

5R



7410NQ AND 7410CQ FANCY SHOPPER

6 oz. 100% Cotton canvas. Fancy web handles. Full side and bottom gussets

- ▶ Colors: Black, Navy, Red, Royal, Natural
- ▶ Dimensions: 15"W x 16"H x 6"D
- ▶ Imprint Area: 10" x 12" on Front or back

QTY:	72	144	300	500	1000
COLOR:	\$6.73	\$5.73	\$5.23	\$5.15	\$4.98
NATURAL:	\$6.23	\$5.23	\$4.73	\$4.65	\$4.48

5R

Price Includes:
One Color Imprint, One Location
Additional Imprint Colors \$1.20 (p)
Screen Charges: \$45 (V) per color

BAGS



7412NQ AND 7412CQ ECONOMICAL TOTE BAG WITH GUSSET

6 oz. Cotton canvas tote bag. Self-fabric handles. Great shopping alternative to a non-woven bag for added strength and durability.

- ▶ Colors: Black, Chocolate, Gold, Hot Pink, Light Pink, Lime Green, Natural, Navy, Orange, Purple, Red, Royal, Sapphire, Turquoise, White, Yellow
- ▶ Dimensions: 15"W x 16"H x 3"D
- ▶ Imprint Area: 10" x 12" on Front or back

QTY:	72	144	300	500	1000
COLOR:	\$5.00	\$4.00	\$3.50	\$3.42	\$3.25
NATURAL:	\$4.50	\$3.50	\$3.00	\$2.92	\$2.75

5R



7413NQ AND 7413CQ MINI TOTE BAG

Mini 6 oz. cotton tote bag. Self-fabric handles. Perfect for gift or goodie bag.

- ▶ Colors: Black, Orange, Natural, Navy, Red, Royal
- ▶ Dimensions: 6"W x 6"H
- ▶ Imprint Area: 2.75" x 2.75" on Front or back

QTY:	72	144	300	500	1000
COLOR:	\$3.73	\$2.73	\$2.23	\$2.15	\$1.98
NATURAL:	\$3.57	\$2.57	\$2.07	\$1.98	\$1.82

5R



7414CQ PROMOTIONAL TOTE BAG W/ GUSSET

Natural 12 oz. cotton canvas tote with gusset and colorful web handles.

- ▶ Colors: Black, Natural, Navy, Red, Royal
- ▶ Dimensions: 15"W x 15"H x 3"D
- ▶ Imprint Area: 8" x 10" Front or back

QTY:	72	144	300	500	1000
COLOR:	\$5.23	\$4.23	\$3.73	\$3.65	\$3.65
NATURAL:					\$3.65

5R



7415NQ AND 7415CQ CANVAS GUSSET TOTE BAG

12 oz. Cotton canvas tote bag with web handles; full side and bottom gussets. Reinforced at stress points.

- ▶ Colors: Black, Natural, Navy, Red, Royal
- ▶ Dimensions: 15"W x 12"H x 4"D
- ▶ Imprint Area: 10" x 8" Front or Back

QTY:	72	144	300	500	1000
COLOR:	\$6.00	\$5.00	\$4.50	\$4.42	\$4.25
NATURAL:	\$5.40	\$4.40	\$3.90	\$3.82	\$3.65

5R



7416NQ AND 7416CQ CANVAS ZIPPER TOTE

12 oz. Cotton canvas tote. Full length top inside zippered pocket.

Long self-fabric handles. Squared-off bottom. Reinforced at stress points.

- ▶ Colors: Black, Natural, Navy, Red, Royal
- ▶ Dimensions: 20"W x 15"H x 5"D
- ▶ Imprint Area: 12" x 10" On Front or back

QTY:	72	144	300	500	1000
COLOR:	\$7.83	\$6.83	\$6.33	\$6.25	\$6.08
NATURAL:	\$6.83	\$5.83	\$5.33	\$5.25	\$5.08

5R



7417NQ AND 7417CQ CANVAS BOOK BAG

12 oz. Canvas book bag. Full side and bottom gusset. Web handles. Great for book stores, gift shops, conferences.

- ▶ Colors: Black, Navy, Red, Royal, Natural
- ▶ Dimensions: 10"W x 12"H x 3"D
- ▶ Imprint Area: 6" x 8" on Front or back

QTY:	72	144	300	500	1000
COLOR:	\$5.33	\$4.33	\$3.83	\$3.75	\$3.58
NATURAL:	\$4.83	\$3.83	\$3.33	\$3.25	\$3.08

5R

Price Includes:
One Color Imprint, One Location
Additional Imprint Colors \$1.20 (p)
Screen Charges: \$45 (V) per color



7418NQ AND 7418CQ CANVAS SHOPPER

12 oz. Cotton canvas shopper tote. Full side and bottom gusset. Web handles. Great alternative to non-woven shopper totes for strength and durability. Machine washable.



- ▶ Colors: Black, Natural, Navy, Red, Royal
- ▶ Dimensions: 14"W x 15"H x 4"D
- ▶ Imprint Area: 8" x 10" on front or back

QTY:	72	144	300	500	1000
COLOR:	\$6.40	\$5.40	\$4.90	\$4.82	\$4.65
NATURAL:	\$5.83	\$4.83	\$4.33	\$4.25	\$4.08

5R

7419NQ AND 7419CQ CANVAS JUMBO SHOPPER

12 oz. Cotton canvas jumbo shopper tote. Full side and bottom gussets. Self-fabric handles. Great upgrade from the basic size shopper tote.

- ▶ Colors: Black, Natural, Navy, Red, Royal
- ▶ Dimensions: 14"W x 17"H x 7"D
- ▶ Imprint Area: 10" x 12" Front or back

QTY:	72	144	300	500	1000
COLOR:	\$7.67	\$6.67	\$6.17	\$6.08	\$5.92
NATURAL:	\$6.73	\$5.73	\$5.23	\$5.15	\$4.98

5R



7420NQ AND 7420CQ CANVAS GUSSET SHOPPING TOTE

12 oz. Cotton canvas shopping tote with 22" handles. Full side and bottom gusset.

- ▶ Colors: Black, Navy, Red, Royal, Natural
- ▶ Dimensions: 10.5"W x 14"H x 5"D
- ▶ Imprint Area: 6" x 8" on Front or back

QTY:	72	144	300	500	1000
COLOR:	\$6.50	\$5.50	\$5.00	\$4.92	\$4.75
NATURAL:	\$5.83	\$4.83	\$4.33	\$4.25	\$4.08

5R



7421NQ AND 7421CQ CANVAS BIG TOTE

11 oz. Cotton canvas tote bag with velcro closure and extra long 24" handles. This bag hauls it all!

- ▶ Colors: Black, Navy, Red, Royal, Natural
- ▶ Dimensions: 23"W x 17"H x 6"D
- ▶ Imprint Area: 12" x 12" on Front or back

QTY:	72	144	300	500	1000
COLOR:	\$8.07	\$7.07	\$6.57	\$6.48	\$6.32
NATURAL:	\$7.07	\$6.07	\$5.57	\$5.48	\$5.32

5R



7422NQ AND 7422CQ CANVAS GUSSET TOTE W/ COLOR HANDLES

12 oz. Cotton canvas tote bag with extra long 24" handles. Side slip pocket for extras.

- ▶ Colors: Black, Natural, Navy, Red, Royal
- ▶ Dimensions: 14"W x 12"H x 5.25"D
- ▶ Imprint Area: 9" x 3.5" On front pocket

QTY:	72	144	300	500	1000
COLOR:	\$7.33	\$6.33	\$5.83	\$5.75	\$5.58
NATURAL:	\$7.00	\$6.00	\$5.50	\$5.42	\$5.25

5R

Price Includes:
 One Color Imprint, One Location
 Additional Imprint Colors \$1.20 (p)
 Screen Charges: \$45 (V) per color

7423CQ AND 7423NQ CANVAS DELUXE TOTE

12 oz. Small cotton canvas shopping tote. Interior zippered security pocket. Reinforced handles extend all the way to reinforced bottom for extra strength. Boat tote styling.

- ▶ Colors: Black, Chocolate, Light Pink, Maroon, Natural, Navy, Orange, Red, Royal
- ▶ Dimensions: 18.5"W x 12"H x 5.5"D
- ▶ Imprint Area: 4" x 3" on front pocket

QTY:	72	144	300	500	1000
COLOR:	\$8.50	\$7.50	\$7.00	\$6.92	\$6.75
NATURAL:	\$8.40	\$7.40	\$6.90	\$6.82	\$6.65

5R



7424NQ AND 7424CQ LARGE CANVAS MESSENGER BAG

12 oz. Cotton canvas oversized messenger bag with extra long shoulder straps.



- ▶ Colors: Black, Natural, Navy, Red, Royal
- ▶ Dimensions: 18"W x 14"H x 4"D
- ▶ Imprint Area: 12" x 10" Front or back

QTY:	72	144	300	500	1000
COLOR:	\$6.23	\$5.23	\$4.73	\$4.65	\$4.48
NATURAL:	\$5.57	\$4.57	\$4.07	\$3.98	\$3.82

5R

7428NQ
22"W x 33"H



7427NQ
19"W x 27"H



7426NQ
18"W x 24"H



SMALL 7426NQ, MEDIUM 7427NQ, LARGE 7428NQ CANVAS DRAWSTRING BAG

12 oz. Cotton canvas drawstring sling sack. Web shoulder strap. Reinforced at stress points. Great for laundry bag, travel duffel, or sport bag.

- ▶ Colors: Natural
- ▶ Dimensions: As Shown
- ▶ Imprint Area: 12" x 12" Front or back

QTY:	72	144	300	500	1000
SMALL:	\$6.40	\$5.40	\$4.90	\$4.82	\$4.65
MEDIUM:	\$7.07	\$6.07	\$5.57	\$5.48	\$5.32
LARGE:	\$9.23	\$8.23	\$7.73	\$7.65	\$7.48

5R



7425NQ AND 7425CQ SMALL CANVAS MESSENGER

12 oz. Cotton canvas messenger bag with extra long straps.

- ▶ Colors: Black, Natural, Navy, Red, Royal
- ▶ Dimensions: 14"W x 12"H
- ▶ Imprint Area: 10" x 8" Front or back

QTY:	72	144	300	500	1000
COLOR:	\$5.17	\$4.17	\$3.67	\$3.58	\$3.42
NATURAL:	\$4.73	\$3.73	\$3.23	\$3.15	\$2.98

5R



7429NQ AND 7429CQ CANVAS STANDARD TOTE BAG

12 oz. Cotton canvas shopping tote bag with 27" handles, inside zipper pocket and hook and loop closure.

- ▶ Colors: Black, Chocolate, Light Pink, Maroon, Navy, Red, Royal, Natural
- ▶ Dimensions: 22"W x 13"H x 5"D
- ▶ Imprint Area: 10" x 4.5" on Front or back

QTY:	72	144	300	500	1000
COLOR:	\$9.50	\$8.50	\$8.00	\$7.92	\$7.75
NATURAL:	\$9.17	\$8.17	\$7.67	\$7.58	\$7.42

5R

Price Includes:
One Color Imprint, One Location
Additional Imprint Colors \$1.20 (p)
Screen Charges: \$45 (V) per color



Additional charges apply if totes need to be folded into pouch.

7035 HEART MORPH SAC

A unique shopper. Tote morphs into its own heart shaped drawstring pouch. 190T Poly.

- ▶ Colors: Black, Pink, Red
- ▶ Dimensions: 15"W x 15"H
- ▶ Imprint Area: 8" x 8" On front or back of bag.

QTY:	50	100	250	500	1000
	\$4.00	\$3.83	\$3.67	\$3.50	3.32
	5R				

7035 HRT

7037 MORPH SAC - GOLF (SHOE BAG)

A unique golf tournament giveaway. The golf ball morphs into a large drawstring bag. Great shoe bag or use for general storage.

- ▶ Colors: Black
- ▶ Dimensions: 15"W x 15"H
- ▶ Imprint Area: 9" x 2" On front or back of bag (1) or Extra 1 color imprint on pouch (2) Front 3" x 3"

QTY:	50	100	250	500	1000
	\$4.98	\$4.82	\$4.65	\$4.42	4.15
	5R				

Additional charges apply if totes need to be folded into pouch.



7037 GOLF

Additional charges apply if totes need to be folded into pouch. Please contact us for pricing.

7036 CAS, 7036 SBR, 7039 FISH

A unique shopper. Tote morphs into its own promotional-shaped drawstring pouch.

- ▶ Colors: As Shown
- ▶ Dimensions: 15"W x 15"H
- ▶ Imprint Area: 8" x 8" CAS 9" x 3" or 1.5" x 1.5" on pouch

QTY:	50	100	250	500	1000
7036 CAS	\$4.00	\$3.83	\$3.67	\$3.50	3.32
7036 SBR	\$4.58	\$4.42	\$4.25	\$4.08	3.92
7039 FISH	\$4.98	\$4.75	\$4.58	\$4.42	4.25
	5R				



7036 CAS

7036 SBR

7039 FISH

7038 MORPH SAC - SPORTS

These strap sacks Morph into their own sports ball-shaped drawstring pouch. Additional charges apply if totes need to be folded into pouch. All items ship flat not folded.

- ▶ Colors: As Shown
- ▶ Dimensions: 15"W x 15"H
- ▶ Imprint Area: 9" x 2" on Tote or 3" x 3" on Pouch

QTY:	50	100	250	500	1000
	\$4.75	\$4.58	\$4.42	\$4.17	3.92
	5R				



7038 FBALL

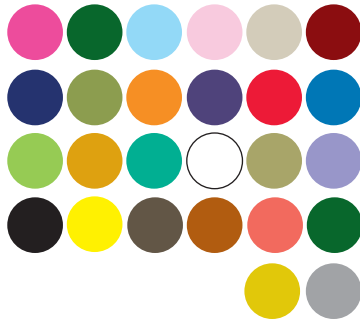
7038 SOCCER

7038 BASEB

7038 BSKT

MISCELLANEOUS INFORMATION

All items ship flat (not folded). Additional imprint charges:
 Add \$1.20 (p) for additional imprint colors on TOTE.
 Add \$2.00 (p) for 1 color imprint on POUCH.
 Black ink only on 7035, 7036 SBR Pouch.
 (Pouch imprints not available on Fish and Football designs.)
 Screen charges: \$45 (V) per color.



5200 LUNCH TOTE

Made with 50% recycled material. Single zippered main compartment. Matching 1.5" wide handles with 7" drop length. Foil insulated interior. Six pack or great lunch cooler. Available in 26 colors!

- ▶ Colors: Hot Pink, Kelly, Light Blue, Light Pink, Light Tan, Maroon, Navy, Olive, Orange, Purple, Red, Royal, Safety Green, Safety Orange, Turquoise, White, Khaki, Lavender, Black, Yellow, Brown, Burnt Orange, Cardinal, Forest, Gold, Gray
- ▶ Dimensions: 9"W x 7.5"H x 5"D
- ▶ Imprint Area: 6.75" x 4.25" On Front Pocket

QTY:	50	150	300	600	1200
	\$6.00	\$5.90	\$5.75	\$5.58	\$5.42
	5R				

7302 CONTRAST HANDLE TOTE

Contrast handle tote, 10 oz. 100% Cotton canvas. Gusseted bottom. Contrasting Polypropylene 22" handles.

- ▶ Colors: Natural/Black, Natural/Forest, Natural/Navy, Natural/Red, Natural/Royal
- ▶ Dimensions: 15"W x 14.5"H x 3"D
- ▶ Imprint Area: 10" x 10" On Front or Back



QTY:	50	150	300	600	1200
	\$4.83	\$4.75	\$4.58	\$4.42	\$4.25
	5R				



7300 BASIC COTTON TOTE

Basic cotton tote, 6 oz. 100% cotton canvas. 22" handles.

- ▶ Colors: Black, Natural, Navy, Royal, Red
- ▶ Dimensions: 15"W x 16"H
- ▶ Imprint Area: 12" x 12" On Front or Back

QTY:	50	150	300	600	1200
COLOR:	\$4.75	\$4.67	\$4.50	\$4.33	\$4.17
NATURAL:	\$3.83	\$3.75	\$3.58	\$3.42	\$3.25
	5R				



7303 MEDIUM COTTON TOTE

Medium cotton tote, 10 oz. 100% cotton canvas. Gusset bottom. 24" carry straps.

- ▶ Colors: Black, Natural, Navy, Red, Royal
- ▶ Dimensions: 10.5"W x 14"H x 5"D
- ▶ Imprint Area: 8.5" x 10.5" On Front or Back

QTY:	50	150	300	600	1200
COLOR:	\$6.33	\$6.25	\$6.08	\$5.90	\$5.73
NATURAL:	\$5.17	\$5.08	\$4.92	\$4.75	\$4.58
	5R				



Price Includes:
One Color Imprint, One Location
Additional Imprint Colors \$1.50 (p)
Screen Charges: \$45 (V) per color

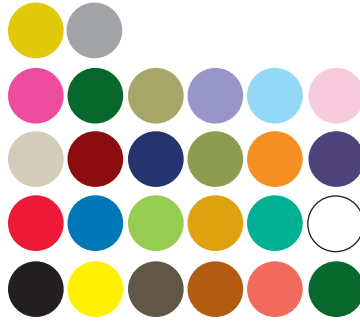
7201 ZIPPERED TOTE

600D Poly blended with 50% Recycled material. Zippered tote. 28" color matched handles. Durable webbing reinforced top.

- ▶ Colors: Black, Yellow, Brown, Burnt Orange, Cardinal, Forest, Gold, Gray, Hot Pink, Kelly, Khaki, Lavender, Light Blue, Light Pink, Light Tan, Maroon, Navy, Olive, Orange, Purple, Red, Royal, Safety Green, Safety Orange, Turquoise, White
- ▶ Dimensions: 18"W x 16"H x 4.75"D
- ▶ Imprint Area: 10" x 10" Front or Back

QTY:	50	150	300	600	1200
	\$6.50	\$6.42	\$6.25	\$6.08	\$5.90

5R



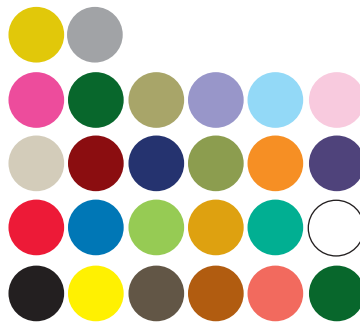
7200 SHOW TOTE

600D Poly blended with 50% Recycled material. Classic tote with durable construction. 28" color matched handle. Available in 26 colors!

- ▶ Colors: Black, Yellow, Brown, Burnt Orange, Cardinal, Forest, Gold, Gray, Hot Pink, Kelly, Khaki, Lavender, Light Blue, Light Pink, Light Tan, Maroon, Navy, Olive, Orange, Purple, Red, Royal, Safety Green, Safety Orange, Turquoise, White
- ▶ Dimensions: 14.75"W x 13.75"H
- ▶ Imprint Area: 10" x 10" Front or Back

QTY:	50	150	300	600	1200
	\$4.33	\$4.25	\$4.17	\$3.82	\$3.65

5R



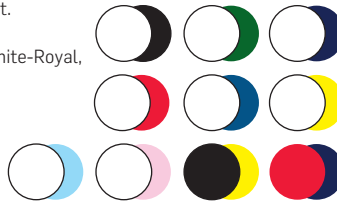
7208 LA PLAYA TOTE

600D Poly Cruiser Tote. Two self fabric carry handles. Open front pocket.

- ▶ Colors: White-Black, White-Forest Green, White-Navy, White-Red, White-Royal, White-Yellow, White-Light Blue, White-Pink, Black-Yellow, Navy-Red
- ▶ Dimensions: 19"W x 12"H x 4.5"D
- ▶ Imprint Area: 5.5" x 5.5" On Front

QTY:	50	150	300	600	1200
	\$6.17	\$6.08	\$6.00	\$5.83	\$5.65

5R



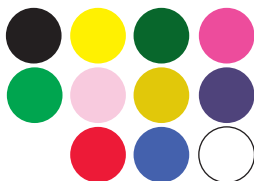
7207 SCHOOL BACKPACK

600D Poly blended with 50% Recycled material. Adjustable padded back straps. Double zippered main compartment. Gusseted front pocket with zippered sleeve pocket. Two hook and loop closure side pockets. Color matched straps, webbing and sturdy, plastic hardware. Top carry handle and locker loop.

- ▶ Colors: Black, Yellow, Forest, Hot Pink, Kelly, Light Pink, Gold, Purple, Red, Royal, White
- ▶ Dimensions: 16"W x 13"H x 6"D
- ▶ Imprint Area: 5.5" x 3" on front

QTY:	50	150	300	600	1200
	\$11.00	\$10.83	\$10.67	\$10.50	\$10.33

5R



Price Includes:
One Color Imprint, One Location
Additional Imprint Colors \$1.20 (p)
Screen Charges: \$45 (V) per color

7222 WALKABOUT

This unique bag functions both as a tote bag and a drawstring pack. Pull string top main compartment for quick conversion to a drawstring pack. Wide strap construction when carrying as a pack. Easy to identify business card holder at the back of bag. Mesh water bottle holder on each side. Double reinforced box stitch handles. 600D Poly.



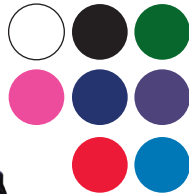
- ▶ Colors: Black, Forest, Red, Royal, Yellow
- ▶ Dimensions: 13"W x 17"H x 5.5"D
- ▶ Imprint Area: 6.5" x 10" On Front

QTY:	50	150	300	600	1200
	\$12.83	\$12.50	\$12.17	\$11.83	\$11.50
	5R				



7210 BASIC DRAWSTRING BACKPACK

Basic drawstring backpack, 210D Poly. Black cord drawstring and matching reinforced corners. Large decorating area.



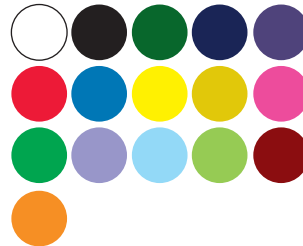
- ▶ Colors: White, Black, Forest, Hot Pink, Navy, Purple, Red, Royal
- ▶ Dimensions: 14"W x 18"H
- ▶ Imprint Area: 11" x 12" On Front

QTY:	50	150	300	600	1200
	\$4.00	\$3.92	\$3.83	\$3.67	\$3.50
	5R				

7211 PREMIUM DRAWSTRING BACKPACK

210D Poly. Color matched DUROcord® drawstring and reinforced corners. Large decorating area.

- ▶ Colors: White, Black, Forest, Navy, Purple, Red, Royal, Yellow, Gold, Hot Pink, Kelly, Lavender, Light Blue, Lime Green, Maroon, Orange
- ▶ Dimensions: 14"W x 18"H
- ▶ Imprint Area: 11" x 12" On Front

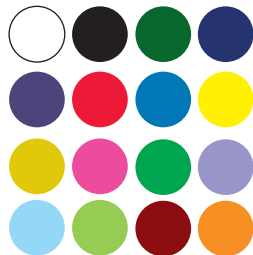


QTY:	50	150	300	600	1200
	\$4.98	\$4.90	\$4.82	\$4.65	\$4.48
	5R				



7212 LARGE DRAWSTRING BACKPACK

Large drawstring backpack, 210D Poly. Oversized strap sack. Color matched DUROcord® drawstring and reinforced corners. Large decorating area.



- ▶ Colors: White, Black, Forest, Navy, Purple, Red, Royal, Yellow, Gold, Hot Pink, Kelly, Lavender, Light Blue, Lime Green, Maroon, Orange
- ▶ Dimensions: 17"W x 20"H
- ▶ Imprint Area: 12" x 12" On Front

QTY:	50	150	300	600	1200
	\$5.73	\$5.65	\$5.57	\$5.40	\$5.23
	5R				



Price Includes:
 One Color Imprint, One Location
 Additional Imprint Colors \$1.20 (p)
 Screen Charges: \$45 (V) per color

7229 ZIP-UP DRAWSTRING PACK



Backpack with full size front zippered pocket. Durable 210D nylon. Black reinforced corners and drawstring.

- ▶ Colors: Black, Hot Pink, Navy, Purple, Red, Royal, White
- ▶ Dimensions: 14"W x 18"H
- ▶ Imprint Area: 9.5"W x 10"H on Front Pocket

QTY:	50	150	300	600	1200
	\$5.15	\$4.98	\$4.82	\$4.65	\$4.48
	5R				

5211 EASY DOZEN COOLER

600D Poly. Front zippered pocket and adjustable shoulder strap. Leak proof PEVA liner. Black contrasting bottom panel and accents for a sleek look. Holds 12 cans.

- ▶ Colors: Black, Forest, Hot Pink, Kelly, Navy, Purple, Red, Royal
- ▶ Dimensions: 10.5"W x 10.25"H x 6"D
- ▶ Imprint Area: 6" x 3" On Front Pocket

QTY:	50	150	300	600	1200
	\$11.25	\$11.00	\$10.75	\$10.50	\$10.25
	5R				



7235 NONWOVEN DRAWSTRING

Heavy weight 90 gsm nonwoven PP. Black contrasting drawstring and reinforced corners. Durable but lightweight.

- ▶ Color: Black, Forest, Navy, Red, Royal
- ▶ Dimensions: 14"W x 17"H
- ▶ Imprint Area: 10" x 11" on Front

QTY:	100	300	600	1200
	\$3.17	\$3.00	\$2.83	\$2.67
	4R			



7236 NYLON DRAWSTRING

Durable 170D Nylon fabric with reinforced corners. Contrasting white drawstring adds interest.

- ▶ Colors: Black
- ▶ Dimensions: 14"W x 17"H
- ▶ Imprint Area: 10" x 11" on Front

QTY:	100	300	600	1200
	\$3.33	\$3.17	\$3.00	\$2.83
	4R			



Price Includes:
 One Color Imprint, One Location
 Additional Imprint Colors \$1.20 (p)
 Screen Charges: \$45 (V) per color

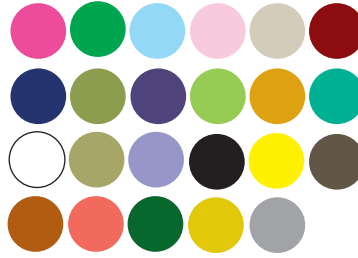
ESPRIT COLLECTION

7206 BANKER BRIEFCASE

600D Poly blended with 50% Recycled material. Large front pocket for easy decoration as well as storage. Zippered main compartment. Side pocket.

- ▶ Colors: Hot Pink, Kelly, Light Blue, Light Pink, Light Tan, Maroon, Navy, Olive, Purple, Safety Green, Safety Orange, Turquoise, White, Khaki, Lavender, Black, Yellow, Brown, Burnt Orange, Cardinal, Forest, Gold, Gray
- ▶ Dimensions: 15.5" x 12"
- ▶ Imprint Area: 12" x 5.5" On Front

QTY:	50	150	300	600	1200
	\$5.92	\$5.83	\$5.67	\$5.50	\$5.33
	5R				



7205 CONVENTION BRIEFCASE

600D Poly blended with 50% Recycled material. Zippered front pocket. Padded handle for easy carrying. Color matched piping and hardware. Color matched shoulder strap and shoulder pad. Detachable/adjustable shoulder strap. Inside ID card holder and double pen loop.

- ▶ Colors: Hot Pink, Kelly, Light Blue, Light Pink, Light Tan, Navy, Olive, Orange, Purple, Red, Royal, Safety Green, Safety Orange, Turquoise, White, Khaki, Lavender, Black, Yellow, Brown, Burnt Orange, Cardinal, Forest, Gold, Gray
- ▶ Dimensions: 15.5"W x 12.5"H x 3.75"D
- ▶ Imprint Area: 11" x 6" On Front

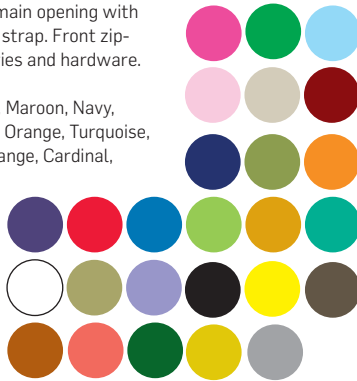
QTY:	50	150	300	600	1200
	\$10.42	\$10.33	\$10.17	\$10.00	\$9.83
	5R				

7204 LARGE DUFFEL BAG

600D Poly blended with 50% Recycled material. Zippered main opening with rain cover over the zipper. Detachable/adjustable shoulder strap. Front zippered pocket. Reinforced bottom. Color matched accessories and hardware.

- ▶ Colors: Hot Pink, Kelly, Light Blue, Light Pink, Light Tan, Maroon, Navy, Olive, Orange, Purple, Red, Royal, Safety Green, Safety Orange, Turquoise, White, Khaki, Lavender, Black, Yellow, Brown, Burnt Orange, Cardinal, Forest, Gold, Gray
- ▶ Dimensions: 23.5"W x 11.5"H x 11"
- ▶ Imprint Area: 4.5" x 4.5" On Front

QTY:	50	150	300	600	1200
	\$13.42	\$13.33	\$13.17	\$13.00	\$12.83
	5R				



7203 BARREL DUFFEL BAG

600D Poly blended with 50% Recycled material. Single zippered main compartment. Diagonal webbing handle. Detachable/adjustable shoulder strap. 100% color matched accessories and hardware.

- ▶ Colors: Hot Pink, Kelly, Light Blue, Light Pink, Light Tan, Maroon, Navy, Olive, Orange, Purple, Red, Royal, Safety Green, Safety Orange, Turquoise, White, Khaki, Lavender, Black, Yellow, Brown, Burnt Orange, Cardinal, Forest, Gold, Gray
- ▶ Dimensions: 18"W x 10"H x 10"D
- ▶ Imprint Area: 8" x 5" on Front

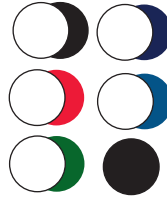
QTY:	50	150	300	600	1200
	\$9.23	\$9.17	\$9.00	\$8.83	\$8.67
	5R				

Price Includes:
One Color Imprint, One Location
Additional Imprint Colors \$1.20 (p)
Screen Charges: \$45 (V) per color



7216 SHORELINE TOTE

Classic XL boat tote but with a zipper. Self fabric contrasting box stitched handles with large outside pocket for easy organization. Inside zippered valuables pocket and key holding J hook. Contrasting bottom gusset 600D Poly.



- ▶ Colors: White/Black, White/Navy, White/Red, White/Royal, White/Forest, Black/Black
- ▶ Dimensions: 22.5"W x 16"H x 8"D
- ▶ Imprint Area: 2.75" x 5" On Front Pocket

QTY:	50	150	300	600	1200
	\$13.75	\$13.42	\$13.08	\$12.75	\$12.42

5R

7217 WATERLINE TOTE

Classic 100% Cotton boat tote style. This 11 oz. cotton canvas tote has contrasting self fabric handles and outside pocket. Contrasting bottom gusset.

- ▶ Colors: Natural/Black, Natural/Navy, Natural/Red, Natural/Royal, Natural/Forest, Natural/Brown
- ▶ Dimensions: 19"W x 12"H x 4"D
- ▶ Imprint Area: 5.5" x 5" On Front Pocket

QTY:	50	150	300	600	1200
	\$10.58	\$10.25	\$9.92	\$9.58	\$9.25

5R



7218 CLIPPER

Thick, durable 16 oz. cotton canvas boat tote. Perfect as a beach carry-all or for a teacher to stay organized. Contrasting handles with outside front pocket. Inside has key ring holder and valuables pocket. Contrasting bottom gusset.

- ▶ Colors: Natural/Black, Natural/Navy, Natural/Red, Natural/Royal, Natural/Forest, Natural/Brown
- ▶ Dimensions: 18.5"W x 11.5"H x 5.5"D
- ▶ Imprint Area: 5.5" x 5" On Front Pocket

QTY:	50	150	300	600	1200
	\$17.08	\$16.67	\$16.25	\$15.83	\$15.42

5R



7219 SCHOONER

Thick, durable 16 oz. cotton canvas boat tote. Slightly larger in size than the Clipper. Contrasting handles with outside front pocket. Inside has key ring holder and valuables pocket. Contrasting bottom gusset.

- ▶ Colors: Natural/Black, Natural/Brown, Natural/Navy, Natural/Red, Natural/Royal, Natural/Forest
- ▶ Dimensions: 21.5"W x 16"H x 6"D
- ▶ Imprint Area: 5.5" x 4" On Front Pocket

QTY:	50	150	300	600	1200
	\$19.73	\$19.33	\$18.92	\$18.50	\$18.08

5R

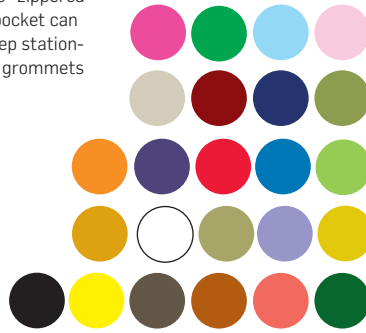


Price Includes:
 One Color Imprint, One Location
 Additional Imprint Colors \$1.20 (p)
 Screen Charges: \$45 (V) per color

7202 THE ORGANIZER TOTE

600D Poly blended with 50% Recycled material. Adjustable handles, 8" x 9" zippered inside hanging pocket. Zippered main compartment. Gusseted front side-pocket can be used as water bottle holder or sun glasses holder. 3 easy access 6" deep stationary pockets. Contoured main front pocket with decorative matching color grommets and pen loops. Plastic accessory hanging ring for easy key attachment.

- ▶ Colors: Black, Yellow, Brown, Burnt Orange, Cardinal, Forest, Gold, Hot Pink, Khaki, Purple, Kelly, Lavender, Light Blue, Light Pink, Light Tan, Maroon, Navy, Olive, Orange, Red, Royal, Safety Green, Safety Orange, White
- ▶ Dimensions: 15.5"W x 13"H x 4"D
- ▶ Imprint Area: 8.5" x 5" On Front Pocket



QTY:	50	150	300	600	1200
	\$10.42	\$10.33	\$10.17	\$10.00	\$9.83

5R



7320 ST. HELENA WINE TOTE

Single wine tote with drawstring closure. Natural 10 oz cotton canvas is the ideal backdrop for your logo.

- ▶ Color: Natural
- ▶ Dimensions: 6.5"W x 13"H
- ▶ Imprint Area: 4"W x 9"H on Front or Back

QTY:	50	150	300	600	1200
	\$5.15	\$5.00	\$4.83	\$4.58	\$4.33

5R



7321 RUTHERFORD WINE TOTE

Single wine tote with cotton webbing handles. Natural 10 oz cotton canvas.

- ▶ Color: Natural
- ▶ Dimensions: 3"W x 10"H x 3"D
- ▶ Imprint Area: 1.5" x 7" On Front or Back

QTY:	50	150	300	600	1200
	\$6.58	\$6.33	\$6.08	\$5.83	\$5.58

5R

7322 CALISTOGA WINE TOTE

Two-bottle wine tote with wide cotton webbing handles. Natural 10 oz cotton canvas. Soft divider keeps bottles safe.

- ▶ Color: Natural
- ▶ Dimensions: 5.25"W x 10"H x 3"D
- ▶ Imprint Area: 3.5"W x 6.5"H on Front only

QTY:	50	150	300	600	1200
	\$7.42	\$7.25	\$7.08	\$6.92	\$6.75

5R



Price Includes:
One Color Imprint, One Location
Additional Imprint Colors \$1.20 (p)
Screen Charges: \$45 (V) per color



8006 DOUBLE-DUTY SLINGPACK



Organize more with pockets galore! This mighty sling will hold everything with its large side-zip main compartment, generous, gusseted zippered front pouch pocket, and a separate easy access slip pocket for your cell phone or accessories. 600D polyester. Adjustable shoulder strap

- ▶ Colors: Black, Blue, Green, Red, Yellow
- ▶ Dimensions: 13"W x 19"H x 4"D
- ▶ Imprint Area: Front pocket 4" x 4" Top pocket: 1-1/4" x 1-1/2"

QTY:	50	100	250	500
	\$6.99	\$5.99	\$5.50	\$4.99
	4R			

8009 THE EDITOR

Looking hip when you zip, sip or clip! This bag has more features than a Cineplex, with its roomy, full-zip main compartment, contrasting center panel, staggered front zip pockets, side gusset bottle pocket and tie down cords. No matter where the adventure takes you, this bag is ready when you are! 600D Polyester. Fully lined main compartment.

- ▶ Colors: Black, Green, Navy and Red
- ▶ Dimensions: 12"W x 15"H x 5"D
- ▶ Imprint Area: 5" x 2-1/2" on lower pocket

QTY:	50	100	250	500
	\$11.20	\$10.40	\$9.60	\$8.80
	4R			



8015 CROSSOVER DUFFEL



Tough enough for him; Pretty enough for her! Like a cocoon, this duffel is rugged and weather resistant on the outside with something beautiful on the inside...its lining! So beautiful, you'll want to roll down the sides and show it off! Perfect for a trip to the gym, an overnight bag, or travel carry on! Water resistant, 230 twill nylon. Breathable side mesh pocket and extra padded base. Long and durable carry handles and adjustable clip-on shoulder strap.

- ▶ Colors: Black outer shell with liner in Grey, Lime, Orange, Purple, Navy, Red
- ▶ Dimensions: 18"W x 11.75"H x 7"D
- ▶ Imprint area: 6.5"W x 5" on front or back

QTY:	25	50	100	250
	\$15.99	\$14.39	\$13.59	\$12.79
	4R			

8007 THE SWAG BAG

Lights, Action, Glamera! Step out in style with this high-fashion favorite. Its high-gloss outer shell puts on the Ritz while its roomy interior, laminated liner and extra-long handle just smartly fits. Whether shopping, gifting or thrifting, you'll have your swag on! 65 gm non-woven, 20 gm opp glossy laminate with matching carry handle

- ▶ Colors: Black, Gold and Silver
- ▶ Dimensions: 13.5"W x 13.75"H x 3"D
- ▶ Imprint Area: 8" x 7" front of back

QTY:	150	500	750	1500
	\$2.95	\$2.70	\$2.65	\$2.55
	4R			



8008 THE EDGE

Simply complex and dramatically chill! We've given this bag an edgy, hip vibe with its angular front zippered slash pocket, webbed trim and contrasting colors. For a bag with such brawn, there's a lot going on! 600D Polyester.

- ▶ Colors: Black, Lime, Red, Royal
- ▶ Dimensions: 12.5"W x 14"H x 3.25"D
- ▶ Imprint area: 6" x 3" on front pocket

QTY:	75	250	500	1000
	\$6.39	\$5.60	\$5.20	\$4.79
	4R			



Price Includes:
One Color Imprint, One Location
Additional Imprint Colors \$0.60 (p)
Screen Charges: \$50 (V) per color

METROPOLITAN COLLECTION -FOB NY



8020 GRILLMASTER BBQ TOOLS

Grilling's not drab when you flip, stab, or grab! These high-quality tools are the essentials when it comes to cooking out! Whether grilling in the backyard, or tailgating with friends and fans, this BBQ Tool Kit is basically perfect. 3 pieces: Tongs, Spatula and Fork. Made of 18-8 Stainless Steel. Packaged in a clear cylindrical case. Includes laser engraving on all 3 tools.

- ▶ Dimensions: 14.25"W x 3.375"H
- ▶ Laser engraving area: 2" x 3/8" on handle
- ▶ Setup laser engraving: \$40 (V)
- ▶ Optional imprint area: 2.25" diameter on lid (not included max 1 color).
- ▶ Additional run charge - \$0.60 (p). Additional setup: \$50 (V)

QTY:	25	50	100	250
	\$15.99	\$15.20	\$14.40	\$13.99
	4R			

8031 SERENITY SPA KIT

The greatest way to end a hard day! Bring the spa with you with this portable spa kit, packed with all the essentials needed to truly pamper yourself. Perfectly natural, and perfectly decadent! Perfect for personal travel essentials, or for a resort welcome kit. This kit includes, a loofa scrubber, massage brush, facial brush, nail brush and mirror. Packaged in a transparent zipper bag.

- ▶ Dimensions: 7.5"W x 4.5"H x 1.5"D
- ▶ Imprint area: 4" x 2" on bag (1 color imprint only)
- ▶ Setup: \$50 (V)

QTY:	50	100	250	500
	\$7.99	\$7.60	\$7.40	\$7.19
	4R			



8025 FRESH KEEPER LUNCH COOLER INSERT

Adjustable size for your thighs, pies, or fries! This portable lunch kit adjusts as your portions do with a collapsible silicone bottom, and keeps your food fresh longer with its seal-tight lid. The lid has a recessed cavity that securely snaps and stores a knife, fork and spoon so they are there when you need them. The perfect companion for any of our lunch coolers! Expandable silicone lunch container, includes built in spoon, fork and knife. Microwave safe, BPA free and FDA approved.

- ▶ Colors: Black, Lime, Red, Royal
- ▶ Dimensions: 6.75"W x 2.5"H x 5"D
- ▶ Imprint area: 4" x 1-1/4" on lid
- ▶ Setup: \$50 (V) per color
- ▶ Additional imprint colors \$0.60 (p)

QTY:	50	100	250	500
	\$7.99	\$7.19	\$6.79	\$6.39
	4R			

8041 PIEDMONT WINE TOOL SET

A cork popper and wine stopper! This connoisseur of wine tool sets will impress even the best sommeliers! Nice enough for entertaining at home, and portable enough to take on a picnic or tailgating. Perfect for anyone who loves good wine, wineries, beverage stores, or hospitality. This set includes a stainless steel corkscrew, and chrome plated wine stopper with rosewood handles and packaged with a gift box. Includes laser engraving on opener and 1 color imprint on box.

- ▶ Dimensions: 5.5"W x 3.75"H x 1.25"D
- ▶ Imprint area: 3-1/2" x 2" on box
- ▶ Laser engraving area: 1-3/8" x 3/8" on opener
- ▶ Setup: \$80 (V)

QTY:	50	100	250	500
	\$12.79	\$11.20	\$10.80	\$10.39
	4R			





5028 CAMO COOLER

Camouflage cooler with black accents. Features waterproof liner. Adjustable shoulder strap. Fits 6-8 bottles with ice. Made of 600D Poly.

- ▶ Colors: Camouflage
- ▶ Dimensions: 13"W x 10.5"H x 9.5"D
- ▶ Imprint Area: 4.75" x 4" Front pocket

QTY:	36	50	100	250	500
	\$16.65	\$16.25	\$15.83	\$15.42	\$14.98
	5R				

5116 ORBIT COOLER

A spacious main compartment with an inside mesh pocket for smaller items. 600D Poly with heat sealed PEVA liner. Large front pocket with grommet detail. Adjustable shoulder strap and padded carry handle on lid. The height accommodates 2-liter bottles.

- ▶ Colors: Gold, Navy, Red, Royal
- ▶ Dimensions: 11.5"W x 12"H x 7"D
- ▶ Imprint Area: 3" x 8" On Front Pocket

QTY:	36	50	100	250	500
	\$12.08	\$11.65	\$11.25	\$10.83	\$10.42
	5R				



5027 BIGFOOT COOLER

Sturdy and strong cooler with waterproof boot on bottom and gator-mouth opening. Made of 600D Poly. PEVA lined.

- ▶ Colors: Black, Red, Royal
- ▶ Dimensions: 13"W x 15"H x 9"D
- ▶ Imprint Area: 6" x 5" Front pocket

QTY:	36	50	100	250	500
	\$23.32	\$22.92	\$22.50	\$22.08	\$21.65
	5R				



Price Includes:
 One Color Imprint, One Location
 Additional Imprint Colors \$1.20 (p)
 Screen Charges: \$45 (V) per color



5111 THE HAMPTON INSULATED TOTE

Insulated Tote with 2 fully insulated compartments allow you to organize the contents. Front slip pocket and side mesh pocket for additional storage. Zippered closure and leak proof liner ensures content stays fresh and cool. 600D Poly with PEVA liner. Top compartment has heat sealed liner.



- ▶ Colors: Black, Red, Royal
- ▶ Dimensions: 16"W x 19"H x 6"D
- ▶ Imprint Area: 5" x 3.5" on Front pocket

QTY:	36	50	100	250	500
	\$14.65	\$14.32	\$13.98	\$13.48	\$12.98
	5R				

5112 TOURNEY COOLER

This golf bag shaped cooler has a front zippered pocket and two side pockets. Contrast piping; carabiner hook on back. Adjustable shoulder strap. 600D Poly with Ripstop Nylon.



- ▶ Colors: Red, Royal, Tan
- ▶ Dimensions: 9.25"W x 14"H x 7.5"D
- ▶ Imprint Area: 4" x 5" Front pocket

QTY:	36	50	100	250	500
	\$16.65	\$16.25	\$15.83	\$15.42	\$14.98
	5R				



5018 FLIP TOP COOLER

Flip top cooler with quick access lid with velcro closure. Features structured bottom, bungee cord details and three exterior pockets. Made of 420D Nylon (Brown 600D Poly)



- ▶ Colors: Brown
- ▶ Dimensions: 15"W x 11"H x 11"D
- ▶ Imprint Area: 4" x 4" Front pocket

QTY:	36	50	100	250	500
	\$23.32	\$22.92	\$22.50	\$22.08	\$21.65
	5R				



5110 DIAMOND STITCH COOLER

A diamond in the rough! That is, a tough cooler with a diamond stitch on front pocket. A large upper zippered compartment keeps delicate items safe from drinks in lower compartment. Heavy-duty padded shoulder straps, large front pocket with reflective trim and two side mesh pockets. Heat sealed PEVA liner.



- ▶ Colors: Royal, Red
- ▶ Dimensions: 13"W x 15"H x 8"D
- ▶ Imprint Area: 2.5" x 4" On Front Pocket

QTY:	36	50	100	250	500
	\$21.65	\$21.25	\$20.83	\$20.42	\$19.98
	5R				



Price Includes:
One Color Imprint, One Location
Additional Imprint Colors \$1.20 (p)
Screen Charges: \$45 (V) per color

5024 LAGUNA INSULATED TOTE

A chic cooler tote with heavy insulation and zippered main compartment. Large mesh front pocket. Design detail on straps is unique to each color. Made of 600D Poly.

- ▶ Colors: Orange-Natural, Pink-Green, Royal-Green, Yellow-Green
- ▶ Dimensions: 14"W x 12"H x 7"D
- ▶ Imprint Area: 12" x 2.5" front pocket

QTY:	36	50	100	250	500
	\$13.32	\$12.92	\$12.50	\$12.08	\$11.65
	5R				

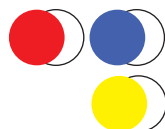


5063 BEACH PICNIC

Beach picnic bag. Great colors for tropical fun. Complete picnic set of four. Water and sand resistant.

- ▶ Colors: Red-White, Royal-White, Yellow-White
- ▶ Dimensions: 14"W x 10.5"H x 4"D
- ▶ Imprint Area: 7.5" x 4" front pocket

QTY:	36	50	100	250	500
	\$13.32	\$12.92	\$12.50	\$12.08	\$11.65
	5R				



5113 MAUI INSULATED TOTE

Fun, floral print on side panels. Two insulated compartments with zipper closure. Front open pocket and side mesh pocket. Tall, slender design for comfortable carrying. Adjustable shoulder strap. 600D Poly with PEVA liner. Top compartment has heat sealed liner.

- ▶ Colors: Lime, Orange, Yellow
- ▶ Dimensions: 16"W x 19"H x 6"D
- ▶ Imprint Area: 5.5" x 3" on Pocket

QTY:	36	50	100	250	500
	\$14.65	\$14.32	\$13.98	\$13.48	\$12.98
	5R				



Price Includes:
 One Color Imprint, One Location
 Additional Imprint Colors \$1.20 (p)
 Screen Charges: \$45 (V) per color

5025 RALLY COOLER

Wheeled cooler with telescoping handle, two side mesh pockets. Features large front pockets, folds down for storage.

- ▶ Colors: Black, Pink, Yellow, Lime, Orange, Royal
- ▶ Dimensions: 11.5"W x 14"H x 7"D
- ▶ Imprint Area: 4.5" x 6" Front Pocket



QTY:	36	50	100	250	500
	\$28.32	\$27.92	\$27.50	\$27.08	\$26.65
	5R				



5026 SEDONA ROLLING COOLER

Rolling cooler made of 600D Poly with telescopic handle. Features front zippered pocket, side mesh pockets.

- ▶ Colors: Maroon-Gray, Navy-Tan, Olive-Gray, Red-Black, Yellow-Gray, Tan-Black
- ▶ Dimensions: 13.5"W x 15.5"H x 8.75"D
- ▶ Imprint Area: 4" x 4.5" On Front Pocket



QTY:	36	50	100	250	500
	\$36.65	\$36.25	\$35.83	\$35.42	\$34.98
	5R				



5045 PICNIC/SHOPPER BASKET

Aluminum frame insulated picnic basket and carry handle. Features foam padding on handle. Frame is detachable for easier cleaning. Insulated, foil lined, zipper closure on lid. Great for picnic or grocery store! Made of 600D Poly. Compatible with rolling coolers.

- ▶ Colors: Red, Royal, Black
- ▶ Dimensions: 15"W x 12"H x 8.5"D
- ▶ Imprint Area: 6" x 3" On Front pocket



QTY:	24	50	100	250	500
	\$26.65	\$26.25	\$25.83	\$25.42	\$24.98
	5R				



Price Includes:
One Color Imprint, One Location
Additional Imprint Colors \$1.20 (p)
Screen Charges: \$45 (V) per color



Holds 3 Cans, Magazines, Newspaper, Tennis Balls, or Golf Tournament Give Aways!

5009 3 CAN COOLER TUBE

Three can cooler tube bag holds 2 bottled waters, tennis or golf balls, clips onto golf bag, stroller, wheel chair etc. Shoulder strap for convenience. Made of 600D Poly.

- ▶ Colors: Black, Royal
- ▶ Dimensions: 15"W x 3.5"H
- ▶ Imprint Area: 8" x 2" On one side

QTY:	50	100	250	500	1000
	\$6.65	\$6.32	\$5.98	\$5.48	\$4.98
	5R				

5014 DRINK CADDIE

Six individual drink compartments. Has condiments compartments, pocket for standard ice pack. Pockets on front and back. Ice pack not included. Made of 600D Poly.

- ▶ Colors: Red, Royal
- ▶ Dimensions: 9"W x 6"H x 7"D
- ▶ Imprint Area: 4" x 3" Centered on front or back pocket

QTY:	50	100	250	500	1000
	\$6.65	\$6.48	\$6.32	\$6.15	\$5.98
	5R				



5070 BBQ APRON

BBQ apron with grilling utensils. Includes fork, spatula, tongs and brush. Features large chest pocket for accessories, rolls up for convenient storage. Padded apron with large chest pocket for accessories. Made of 600D Poly.

- ▶ Colors: Black, Hunter
- ▶ Dimensions: 15"W x 34"H
- ▶ Imprint Area: 5" x 5" Front pocket

QTY:	36	50	100	250	500
	\$23.32	\$22.92	\$22.50	\$22.08	\$21.65
	5R				

5012 AQUATOTE

Premium insulated bottle cooler with adjustable shoulder strap and zippered pocket on back for essentials. Drawstring top for non-spill carrying.

- ▶ Colors: Black, Royal
- ▶ Dimensions: 6.5"H x 3.5"D
- ▶ Imprint Area: 2" x 2.5" Front pocket

QTY:	50	100	250	500	1000
	\$4.98	\$4.82	\$4.65	\$4.48	\$4.32
	5R				



Price Includes:
 One Color Imprint, One Location
 Additional Imprint Colors \$1.20 (p)
 Screen Charges: \$45 (V) per color

5029 UPTOWN LUNCH COOLER

Lunch cooler with two insulated compartments. Features front zippered pocket, comfortable carry handle. Made of 600D Poly.

- ▶ Colors: Black, Red, Lime, Pink, Yellow, Royal
- ▶ Dimensions: 9.5"W x 8.75"H x 6.5"D
- ▶ Imprint Area: 3" x 2.5" On Front Pocket



QTY:	36	50	100	250	500
	\$9.15	\$8.98	\$8.82	\$8.65	\$8.32

5R



5100 THE LUNCHBOX

The Lunchbox is made of non-woven PP with two compartments. Your kids have one - now you can too! This one without the cartoon but still very cute. Insulated with drawstring closure, carry handles and front pocket. Black with contrasting fabric and stitching detail.



- ▶ Colors: Lime, Pink, Blue, Purple, Red
- ▶ Dimensions: 8.5"W x 7.5"H x 5.5"D
- ▶ Imprint Area: 5" x 2.5" Front pocket, 1 color imprint only

QTY:	50	100	250	500	1000
	\$4.42	\$4.25	\$4.08	\$3.92	\$3.75

5R

5102 THE GOURMET

Thick insulation and PEVA liner. Snap closure and side ties keep contents in place. Cutout handles and slim design makes this the elegant choice for brown-bagging. 600D Poly.

- ▶ Colors: Black, Lime, Red, Royal
- ▶ Dimensions: 16"W x 12"H x 5.5"D
- ▶ Imprint Area: 6" x 5" Front pocket



QTY:	50	100	250	500	1000
	\$8.00	\$7.67	\$7.33	\$7.00	\$6.65

5R

5103 SNACK PACK

Two front pockets in contrasting black. Side mesh pocket for added storage. Velcro closure keeps cooler closed. 210D Poly with Peva liner. PVC Free.



- ▶ Colors: Black, Lime, Navy, Orange, Red, Royal
- ▶ Dimensions: 10"L x 12"H x 4.75"D
- ▶ Imprint Area: 3"W x 3"H Front Main Pocket

QTY:	50	100	250	500	1000
	\$4.33	\$4.08	\$3.83	\$3.58	\$3.32

5R



Price Includes:
One Color Imprint, One Location
Additional Imprint Colors \$1.20 (p)
Screen Charges: \$45 (V) per color



5104 LUNCH WAVE COOLER



Front pocket and zipper closure. Grommet details on handles. Black body with grey accents and contrasting color on front pocket. 600D Poly with PEVA liner.

- ▶ Colors: Black, Red, Royal
- ▶ Dimensions: 13.5"W x 9"H x 6"D
- ▶ Imprint Area: 3" x 3" Front pocket

QTY:	50	100	250	500	1000
	\$6.92	\$6.65	\$6.42	\$6.08	\$5.75

5R



5115 TOWER COOLER

Two side mesh pockets to hold bottle opener, keys, granola bar - anything you want quick access to. Black body with white piping and grey accents creates the crisp look of this cooler. Contrasting color panels on side and front pocket. Wide, adjustable shoulder strap allows a perfect fit for everybody. 600D Poly with PEVA liner.



- ▶ Colors: Lime, Orange, Royal
- ▶ Dimensions: 10"W x 12"H x 9"D
- ▶ Imprint Area: 3"W x 3"H on front pocket

QTY:	36	50	100	250	500
	\$10.83	\$10.42	\$9.98	\$9.58	\$9.17

5R



5007 FOLDAWAY 12 PACK COOLER



Foldaway 12 pack cooler travel bag with heavy insulation that keeps 12 cans cool for hours, and three exterior pockets. Collapses and folds down to 3". Shoulder strap. Made of 600D Poly.

- ▶ Colors: Black, Red, Royal
- ▶ Dimensions: 12"W x 9"H x 9"D
- ▶ Imprint Area: 5" x 2.5" Front pocket

QTY:	36	50	100	250	500
	\$11.65	\$11.25	\$10.83	\$10.42	\$9.98

5R

Price Includes:
 One Color Imprint, One Location
 Additional Imprint Colors \$1.20 (p)
 Screen Charges: \$45 (V) per color

BLANKETS

9015 AL FRESCO BLANKET

Soft fleece blanket with Nylon shell. Zips into sleek carry case. Stripe on outside matches the stripes on blanket. Perfect for picnics and concerts, or as a stadium cushion.

- ▶ Colors: Pink
- ▶ Dimensions: 48"W x 55"L
- ▶ Imprint Area: 8" x 3" Front Pocket

QTY:	36	100	250	500
	\$14.98	\$14.75	\$14.50	\$14.17
	4R			



9014 OUTBACK BLANKET

Warm polar fleece with quilted design. Water resistant blanket with heavy duty Nylon shell. Carry strap and two side pockets. Use as seat cushion when folded.



- ▶ Colors: Black, Gray, Hunter, Navy, Red, Burgundy, Black Watch, Buffalo, Charcoal, Royal
- ▶ Dimensions: 50"W x 60"L
- ▶ Imprint Area: 6" x 4" On front

QTY:	36	100	250	500
	\$20.83	\$19.98	\$19.17	\$18.32
	4R			

9017 SADDLE UP BLANKET

180 g/sqm polar fleece with 600D poly flap with decorator pocket. Attached carry strap.

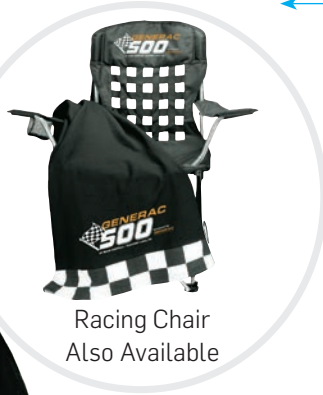
- ▶ Colors: Black, Gray, Navy, Red, Royal
- ▶ Dimensions: 47" x 53"
- ▶ Imprint Area: 6" x 2.5" On Front Pocket

QTY:	24	100	250	500
	\$12.92	\$12.50	\$11.65	\$10.82
	4R			



Price Includes:
 One Color Imprint, One Location
 Additional Imprint Colors \$1.50 (p)
 Screen Charges: \$45 (V) per color

9006 RACING BLANKET



Racing Chair Also Available

Racing blanket with checkered flag trim on both ends. Heavy 12 ounce fleece blanket with super large area for maximum logo visibility. Racing chair also available.

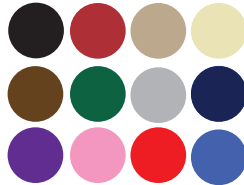
- ▶ Colors: Black
- ▶ Dimensions: 50"W x 60"L
- ▶ Imprint Area: 9" x 12" Bottom center of blanket
- ▶ Includes 1 color imprint
- ▶ Additional imprint colors: \$1.20 (p)
- ▶ Screen charge: \$45 (V) per color

QTY:	36	100	250	500
	\$19.58	\$19.17	\$18.75	\$18.32
	4R			

9020 CORAL FLEECE BLANKET

The softest, most luxurious fleece on the market. Comes individually folded, and sealed in a clear vinyl zippered case.

- ▶ Colors: Black, Burgundy, Camel, Cream, Cocoa, Forest, Gray, Navy, Purple, Pink, Red, Royal
- ▶ Dimensions: 50"W x 60"L
- ▶ Decorating Area: Embroidered on bottom corner of blanket.



QTY:	36	100	250	500
	\$15.83	\$15.42	\$14.58	\$13.75
	4R			

Blank pricing only. Contact factory for embroidery.



9003 SHERPA FLEECE BLANKET

Double layered blanket with sherpa fleece with mink fleece liner. Soft as butter, warm as wool! Fluffy soft and super warm. Zipper hem in corner. Vinyl zippered bag.

- ▶ Colors: Black, Camel, Chocolate, Gray, Navy, Burgundy, Sage, Cream, Forest Green, Red, Royal
- ▶ Dimensions: 50"W x 60"L
- ▶ Decorating Area: Embroidered on bottom corner of blanket.



QTY:	24	100	250	500	1000
	\$23.17	\$22.50	\$21.25	\$19.98	\$18.75
	5R				

Blank pricing only. Contact factory for embroidery.



9013 SUPER SHERPA

Double layered blanket with sherpa fleece with mink fleece liner. Soft as butter, warm as wool! Fluffy soft and super warm. Zipper hem in corner for embroidery. Vinyl zippered bag.

- ▶ Colors: Black, Chocolate, Camel, Gray, Navy
- ▶ Dimensions: 60"W x 72"L
- ▶ Decorating Area: Embroidered on bottom corner of blanket



QTY:	24	100	250	500	1000
	\$32.50	\$31.67	\$30.42	\$29.17	\$27.92
	5R				

Blank pricing only. Contact factory for embroidery.



9001 SWEATSHIRT BLANKET

Sweatshirt stadium fleece blanket, 50" x 60" heavy 12 oz. sweatshirt material. Super large imprint area for maximum logo visibility.

- ▶ Colors: Black, Heather Grey, Hunter, Navy, Red, Royal
- ▶ Dimensions: 50"W x 60"L
- ▶ Imprint Area: 9" x 12" Bottom center
- ▶ Includes 1 color imprint
- ▶ Additional imprint colors: \$1.20 (p)
- ▶ Screen charge: \$45 (V) per color



QTY:	36	100	250	500
GREY:	\$22.92	\$22.50	\$22.08	\$21.65
COLOR:	\$22.92	\$22.50	\$22.08	\$21.65

4R

FP280 POLAR FLEECE

This mid-weight throw offers a thicker pile for even greater thermal protection. Whether at the ballgame, or on your couch, this blanket fills the bill. Add the hook and loop carry handle and straps for the perfect portable throw.

- ▶ Colors: Black, Brown, Burgundy, Camel, Cream, Forest, Gray, Heather, Navy, Orange, Pink, Purple, Red, Royal, Yellow
- ▶ Dimensions: 50"W x 60"L



QTY:	36	100	250	500
	\$9.98	\$9.58	\$9.17	\$8.32

4R

Blank pricing only.
Contact factory for embroidery.

FP180 PROMOTIONAL FLEECE

When price is the deciding factor, this fleece throw is the way to go. This super lightweight fleece blanket can keep out the cold, and keep in the warmth.

- ▶ Colors: Black, Burgundy, Cream, Forest, Gray, Navy, Orange, Pink, Purple, Red, Royal, Yellow
- ▶ Dimensions: 50"W x 60"L
- ▶ Imprint on bottom corner.

QTY:	36	100	250	500
	\$8.32	\$7.92	\$7.50	\$6.65

4R

Blank pricing only.
Contact factory for embroidery.



9022 SOUTHERN PLUSH BLANKET

Put a little filet mignon with your couch potato. 50" x 60" blanket. Ultra-plush mink touch fabric. Anti-pill and hypoallergenic. Finished self-hem with decorative top stitch finish. Packed in a vinyl bag. Call for embroidery pricing.

- ▶ Colors: Black, Burgundy, Cream, Forest, Gray, Navy, Red, Royal
- ▶ Dimensions: 50"W x 60"H



QTY:	24	100	250	500
	\$19.98	\$19.17	\$17.50	\$15.87
	4R			

Blank pricing only



9173 SOUTHERN PLUS ROBE



Better plan on being late for work. One size fits most. 50" long. Ultra-plush mink fabric. Anti-pill and hypoallergenic. Finished self-hem with decorative top stitch finish. Packed in a vinyl zippered bag.

- ▶ Color: Navy, White
- ▶ Dimensions: 50"L

QTY:	24	100	250	500
	\$36.65	\$34.98	\$33.32	\$31.65
	4R			

Blank pricing only

9023 PLUSH BABY BLANKET

Infant to toddler luxury swaddler. Your baby deserves nothing less than the best! 30" x 40" Blanket. Ultra-plush mink touch fabric. Anti-pill and hypoallergenic. Finished self-hem with decorative top stitch finish. Packed in a vinyl bag. Call for embroidery pricing.

- ▶ Colors: Blue, Pink, Yellow, White
- ▶ Dimensions: 30"W x 40"H

QTY:	24	100	250	500
	\$9.17	\$8.32	\$7.50	\$6.65
	4R			

Blank pricing only



Blank pricing.
Contact us for
embroidery pricing.

TOWELS



9102WQ/CQ HAND TOWEL HEMMED

100% Cotton hand towel. One side velour with terry on other side. 2.5 lbs. per dozen approx. Add \$.31 (V) for grommet and hook.

- ▶ Colors: Azalea, Black, Forest Green, Gold, Hot Pink, Light Blue, Light Pink, Lime, Maroon, Natural, Navy, Orange, Purple, Red, Royal, Yellow, Yellow Haze, White
- ▶ Dimensions: 16"W x 25"L
- ▶ Imprint Area: 12" x 14"

QTY:	72	144	300	500	1000
COLOR:	\$5.50	\$4.50	\$4.00	\$3.92	\$3.75
WHITE	\$5.07	\$4.07	\$3.57	\$3.48	\$3.32

5 R

9106WQ/CQ FINGERTIP TOWEL HEMMED

One side velour with terry loop on other side. Hemmed ends. 100% Cotton. 1.3 lbs. per dozen approx. Add .31 (V) for grommet and hook.

- ▶ Colors: Azalea, Black, Forest Green, Gold, Hot Pink, Light Blue, Light Pink, Lime, Maroon, Natural, Navy, Orange, Purple, Red, Royal, Yellow, Yellow Haze, White
- ▶ Dimensions: 11"W x 18"L
- ▶ Imprint Area: 8" x 12"

QTY:	72	144	300	500	1000
COLOR:	\$4.23	\$3.23	\$2.73	\$2.65	\$2.48
WHITE	\$4.07	\$3.07	\$2.57	\$2.48	\$2.32

5 R



9101WQ AND 9101CQ FINGERTIP TOWEL FRINGED

One side velour with terry loop on other side. Fringed ends. 100% Cotton. 1.3 lbs. per dozen approx. Add \$.31 (V) for grommet and hook.

- ▶ Colors: Azalea, Black, Forest Green, Gold, Hot Pink, Light Blue, Light Pink, Lime, Maroon, Natural, Navy, Orange, Purple, Red, Royal, Yellow, Yellow Haze, White
- ▶ Dimensions: 11"W x 18"L
- ▶ Imprint Area: 8" x 12"

QTY:	72	144	300	500	1000
COLOR:	\$4.23	\$3.23	\$2.73	\$2.65	\$2.48
WHITE	\$4.07	\$3.07	\$2.57	\$2.48	\$2.32

5 R



9114WQ FITNESS TOWEL 11 X 44

100% Cotton one side velour with terry on the other side. Hemmed end. 4.0 lbs. per dozen approx. White only.

- ▶ Colors: White
- ▶ Dimensions: 11"W x 44"L
- ▶ Imprint Area: 7" x 17"

QTY:	72	144	300	500	1000
	\$6.42	\$5.42	\$4.92	\$4.83	\$4.67

5 R



9115WQ FITNESS TOWEL 24x42

100% Cotton velour on one side, terry loop on the other side. Hemmed end. 7.00 lbs. per dz. approx. Fitness or bath size.

- ▶ Colors: White
- ▶ Dimensions: 24"W x 42"L
- ▶ Imprint Area: 14" x 14"

QTY:	72	144	300	500	1000
	\$8.75	\$7.75	\$7.25	\$7.17	\$7.00

5 R

Price Includes:
One Color Imprint, One Location
Additional Imprint Colors \$0.44 (p)
Screen Charges: \$45 (V) per color

7606NQ/CQ BISTRO APRON

7.5oz. Twill, Cotton/Poly fabric. Full length apron. Two patch pockets at waist level, binding trim. 1" wide neck strap with sewn-on buckle for adjustable fit.

- ▶ Colors: Black, Forest Green, Natural, Navy, Royal, Red, White
- ▶ Dimensions: 22"W x 30"H
- ▶ Imprint Area: 8" x 8" On Front Chest



QTY:	72	144	300	500	1000
	\$8.57	\$7.57	\$7.07	\$6.98	\$6.82
	5R				



7602NQ/CQ MEDIUM LENGTH APRON W/ POUCH

Medium length bib-style apron with front pouch. 7.5 oz. Twill, Cotton/Poly fabric, full width pouch 8 inches deep with three compartments, binding trim. 1 inch wide extra-long waist ties. 1 inch wide neck strap with sewn-on buckle for adjustable fit.

- ▶ Colors: Black, Forest Green, Natural, Navy, Red, Royal, White
- ▶ Dimensions: 22"W x 24"H
- ▶ Imprint Area: 8" x 10" On Front Chest

QTY:	72	144	300	500	1000
	\$8.40	\$7.40	\$6.90	\$6.82	\$6.65
	5R				



7604NQ ECONOMICAL WAIST APRON 2P

6 oz. Cotton fabric, pouch divided into 2 equal compartments at waist.

- ▶ Colors: Natural
- ▶ Dimensions: 24"W x 12"H
- ▶ Imprint Area: 5.5" x 3" on right or left pocket

QTY:	72	144	300	500	1000
	\$4.57	\$3.57	\$3.07	\$2.98	\$2.82
	5R				



7605WQ/CQ CAFE APRON

7.5 oz. Twill, Cotton/Poly fabric. Heavy-duty waist apron. Pouch divided into three equal compartments.

- ▶ Colors: Black, Forest Green, Maroon, Natural, Navy, Royal, Red, White
- ▶ Dimensions: 24"W x 12"H
- ▶ Imprint Area: 4.5" x 4.5" on front center pocket or above pockets

QTY:	72	144	300	500	1000
	\$6.07	\$5.07	\$4.57	\$4.48	\$4.32
	5R				

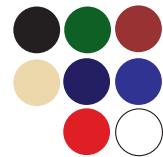
7603NQ/CQ BUTCHER APRON

Butcher style apron (no pockets). 7.5 oz. Twill fabric, full length with plain front. Generous cut, self-fabric neck strap. Extra-long waist ties can wrap around and tie in front. Cotton/Poly.

- ▶ Colors: Black, Forest Green, Maroon, Natural, Navy, Red, Royal, White
- ▶ Dimensions: 28"W x 34"H
- ▶ Imprint Area: 8" x 10" on front chest



QTY:	72	144	300	500	1000
	\$8.07	\$7.07	\$6.57	\$6.48	\$6.32
	5R				



7607NQ/CQ WIDE APRON

Full length wide apron. 7.5 oz. Twill fabric, full length with plain front. Generous cut, self-fabric neck strap. Extra long waist ties can wrap around and tie in front. Cotton/Poly. Wide Bib for large printing area.

- ▶ Colors: Black, White
- ▶ Dimensions: 28"W x 34"H
- ▶ Imprint Area: 10" x 10" on front chest



QTY:	72	144	300	500	1000
	\$8.07	\$7.07	\$6.57	\$6.48	\$6.32
	5R				



7608NQ ECONOMICAL WAIST APRON 3P

Basic waist apron. 6 oz. Cotton fabric, pouch divided into 3 equal compartments.

- ▶ Colors: Natural
- ▶ Dimensions: 24"W x 12"H
- ▶ Imprint Area: 5.5"W x 3"H on Front Pocket

QTY:	72	144	300	500	1000
	\$4.57	\$3.57	\$3.07	\$2.98	\$2.82
	5R				



Price Includes:
One Color Imprint, One Location
Additional Imprint Colors \$1.20 (p)
Screen Charges: \$45 (V) per color



FPM-39 PENCIL UMBRELLA

Small, slim design with ultralight aluminum shaft and matching sleeve. 6 panels.



- ▶ Colors: Black, Electric Blue, Lime, Mango, Orange, Pink, Turquoise
- ▶ Dimensions: 39" arc, 9" closed
- ▶ Imprint Area: on panel (1) 6" x 5" or on sleeve (2) 3" x 1"

QTY:	36	100	250	500	1000
	\$11.00	\$10.50	\$9.07	\$7.92	\$7.50

2PQ2R

FFR-39 MINI UMBRELLA

Rectangular shape with accent handle umbrella. Matching sleeve. 6 panels.

- ▶ Colors: Pink, Purple, Red, Royal
- ▶ Dimensions: 39" arc, 9" closed
- ▶ Imprint Area: on panel (1) 7" x 5" or sleeve (2) 3" x 1"



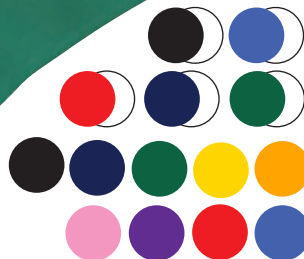
QTY:	36	100	250	500	1000
	\$11.00	\$10.50	\$9.07	\$7.92	\$7.50

2PQ2R



FO-43 POP-UP AUTOMATIC

Automatic open folding umbrella with plastic grip handle and wrist cord. Matching sleeve. 8 panels.



- ▶ Colors: Black-White, Red-White, Navy-White, Black, Navy, Hunter, Hunter-White, Royal-White, Gold, Orange, Pink, Purple, Red, Royal
- ▶ Dimensions: 43" Arc, 15.5" closed
- ▶ Imprint Area: on panel (1) 6" x 6" or on sleeve (2) 4" x 1"

QTY:	36	100	250	500	1000
	\$9.98	\$9.50	\$8.18	\$7.08	\$6.65

2PQ2R

Price Includes:
 One Color Imprint, One Location
 Additional Imprint Colors \$1.50 (p)
 Screen Charges: \$45 (V) per color



PM-43 MANUAL OPEN FOLDING UMBRELLA



Simple, functional, budget-friendly! Less is more with this no-frills folding umbrella. With the same generous size as our best-selling FO-43 but without the auto open feature, it is sure to satisfy the budget minded. 43" Arc, folding Umbrella. Metal shaft and ribs. Manual open with plastic ribbed handle and matching sleeve.

- ▶ Color: Black, Gold, Navy, Orange, Red, Royal
- ▶ Dimensions: 42" Arc
- ▶ Imprint area: 6" x 6"

QTY:	36	100	250	500	1000
	\$7.98	\$7.50	\$6.36	\$5.42	\$4.98
	2PQ2R				

SF-48 SAFETY UMBRELLA

With weather at its worst, we still put safety first! This ultra-light, mid-size umbrella has style, yet can be seen for a mile! It's trimmed with a high optic reflector strip that can be seen day or night. Perfect for the downtown walkers, school crossing guards, safety programs, airlines and construction. Superior quality, yet light-weight due to its premium 14mm, aluminum shaft with black fluted metal ribs. Features an Easy-Push, auto-open button and ribbed EVA foam handle.

- ▶ Color: Black
- ▶ Dimensions: 48" Arc
- ▶ Imprint area: 8"W x 5.5"H

QTY:	36	100	250	500	1000
	\$11.98	\$11.50	\$10.00	\$8.75	\$8.32
	2PQ2R				



FPR-43 PINK RIBBON UMBRELLA

Auto opening folding umbrella with matching sleeve. Eye-catching, pink ribbon design appears only when wet! 8 panels.

- ▶ Colors: Pink
- ▶ Dimensions: 43" Arc, 15.5" closed
- ▶ Imprint Area: panel (1) 6" x 6" or sleeve (2) 10" x 1"

QTY:	36	100	250	500	1000
	\$13.98	\$13.50	\$11.82	\$10.42	\$9.98
	2PQ2R				

Price Includes:
 One Color Imprint, One Location
 Additional Imprint Colors \$1.50 (p)
 Screen Charges: \$45 (V) per color

Ribbons Show Up Only When Wet!

DD-48 DIAMOND DOBBY DELUXE

Deluxe, diamond dobbie Nylon with sure grip rubber handle. Auto open, folding with steel shaft and matching sleeve with shoulder straps. UV coating on underside of bronze.



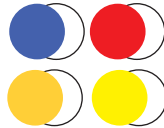
- ▶ Colors: Black, Bronze
- ▶ Dimensions: 48" Arc, 17" closed
- ▶ Imprint Area: on panel (1) 7" x 7" on sleeve (2) 5" x 1"

QTY:	36	100	250	500	1000
	\$17.98	\$17.50	\$15.45	\$13.75	\$13.32
	2PQ2R				



CU-48 CLAMP ON UMBRELLA

Clamp on umbrella. Great accessory for all of our chairs! Unique, rotating clamp fits most folding chairs, strollers or wheelchairs. No Sleeve.



- ▶ Colors: Royal-White, Red-White, Gold-White, Yellow-White
- ▶ Dimensions: 48" Arc, 33" closed
- ▶ Imprint Area: 7" x 7"

QTY:	36	100	250	500	1000
	\$18.50	\$17.98	\$15.91	\$14.17	\$13.75
	2PQ2R				

FOW-48 WOODEN HANDLE AUTO

Folding auto open with deluxe wood handle with leather wrist cord. Matching sleeve.



- ▶ Colors: Black, Navy
- ▶ Dimensions: 48" Arc, 17" closed
- ▶ Imprint Area: on panel (1) 7" x 7" on sleeve (2) 10" x 1"

QTY:	36	100	250	500	1000
	\$13.00	\$12.50	\$10.89	\$9.58	\$9.17
	2PQ2R				



Wood Handle with Leather Wrist Cord.

Price Includes:
One Color Imprint, One Location
Additional Imprint Colors \$1.50 (p)
Screen Charges: \$45 (V) per color

FAL-48 THE FIZZ UMBRELLA



Super lightweight with aluminum shaft and EVA foam handle. Canopy is covered with polka dots. Unique, pinchless operation opens with a slight push. No sleeve.

- ▶ Colors: Green, Red, Yellow
- ▶ Dimensions: 48" Arc, 34" closed
- ▶ Imprint Area: 9" x 4" on panel

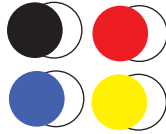


QTY:	36	100	250	500	1000
	\$13.00	\$12.50	\$10.89	\$9.58	\$9.17
	2PQ2R				

RAL-48 THE RIVIERA UMBRELLA

Super lightweight with aluminum shaft and EVA foam handle. Unique pinchless operation, opens with a slight push. No sleeve.

- ▶ Colors: Black/White, Red/White, Royal/White, Yellow/White
- ▶ Dimensions: 48" Arc, 35" closed
- ▶ Imprint Area: 7" x 3" on panel



QTY:	36	100	250	500	1000
	\$13.00	\$12.50	\$10.89	\$9.58	\$9.17
	2PQ2R				



Wooden Toggle Button on Tie.



BWI-48 BAMBOO UMBRELLA

Bamboo shaft with curved handle makes this umbrella a "green" choice. Three different color alternating panels. Wooden toggle button on tie with matching sleeve.

- ▶ Colors: Blue, Green, Pink
- ▶ Dimensions: 48" Arc, 34" closed
- ▶ Imprint Area: on panel (1) 7" x 7" on sleeve (2) 10" x 1"



QTY:	36	100	250	500	1000
	\$13.00	\$12.50	\$10.89	\$9.58	\$9.17
	2PQ2R				

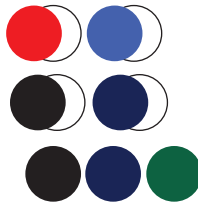
Price Includes:
 One Color Imprint, One Location
 Additional Imprint Colors \$1.50 (p)
 Screen Charges: \$45 (V) per color

UMBRELLAS

FO-60 FOLDING GOLF UMBRELLA

Auto open, folding golf umbrella provides extra coverage! Oversized wood handle for maximum comfort and matching sleeve with strap.

- ▶ Colors: Red-White, Royal-White, Black, Navy-White, Navy, Hunter, Black-White
- ▶ Dimensions: 60" arc, 23" closed
- ▶ Imprint Area: on panel (1) 8" x 8" on sleeve (2) 10" x 1"



QTY:	36	100	250	500	1000
	\$18.98	\$17.98	\$15.45	\$13.32	\$12.50
	2PQ2R				

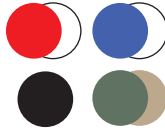


FHU-60 FOLDING HURRICANE

Vented, auto open, folding golf umbrella with oversize wood handle and matching sleeve.

- ▶ Colors: Black, Red-White, Royal-White, Tan-Olive
- ▶ Dimensions: 60" arc, 23" closed
- ▶ Imprint Area: on panel (1) 8" x 8" on sleeve (2) 10" x 1"

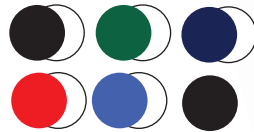
QTY:	36	100	250	500	1000
	\$19.98	\$19.00	\$16.35	\$14.17	\$13.32
	2PQ2R				



NAI-48 SCHOOL GOLF UMBRELLA

School golf umbrella. Auto open, steel shaft with dark wooden handle. No sleeve.

- ▶ Colors: Black, Black/White, Hunter/White, Navy/White, Red/White, Royal/White
- ▶ Dimensions: 48" arc, 33" closed
- ▶ Imprint Area: 7" x 7" on panel



QTY:	36	100	250	500	1000
	\$11.00	\$10.50	\$9.07	\$7.92	\$7.50
	2PQ2R				



Price Includes:
One Color Imprint, One Location
Additional Imprint Colors \$1.50 (p)
Screen Charges: \$45 (V) per color



SQ-60 SQUARE GOLF UMBRELLA

Unique square shape provides maximum logo exposure! Fiberglass shaft and ribs with EVA handle and matching sleeve. The lightest golf umbrella available.



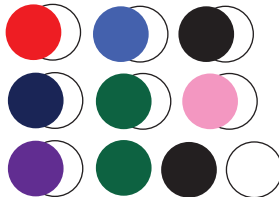
- ▶ Colors: Royal-Black, Red-Black, Yellow-Black, Maroon-Gray, Lime-Black, Orange-Black, White-Black
- ▶ Dimensions: 60" Arc, 38.5" closed
- ▶ Imprint Area: on panel (1) 12" x 4.5" on sleeve (2) 10" x 1"

QTY:	36	100	250	500	1000
	\$21.98	\$21.00	\$18.16	\$15.83	\$14.98
	2PQ2R				

NMI-60 PROMOTIONAL GOLF UMBRELLA

Budget friendly for the bogie golfer. Steel shaft and ribs for strength. Manual open with matching grip handle and sleeve.

- ▶ Colors: Red-White, Royal-White, Black-White, Black, Navy-White, Hunter, Hunter-White, White, Pink-White, Purple-White
- ▶ Dimensions: 60" Arc, 38.5" closed.
- ▶ Imprint Area: on panel (1) 8" x 8" on sleeve (2) 10" x 1"



QTY:	36	100	250	500	1000
	\$13.98	\$13.50	\$11.36	\$9.98	\$9.58
	2PQ2R				



AF-56 AUTO OPEN FIBERGLASS GOLF UMBRELLA

It's staying dry you'll be hopin, when you pop me open! We've combined the durability of fiberglass, the convenience of auto-open, and the value of a sharp price to create this new favorite golf umbrella! With a comfortable, contour grip handle, fiberglass shaft and ribs, it is sure to feel at home in your hand. 56" Arc, auto-open. Fiberglass shaft and ribs with pistol grip handle.

- ▶ Color: Royal
- ▶ Dimensions: 56" Arc
- ▶ Imprint area: 8" x 8"

QTY:	36	100	250	500	1000
	\$15.98	\$15.50	\$13.64	\$12.08	\$11.65
	2PQ2R				

Price Includes:
 One Color Imprint, One Location
 Additional Imprint Colors \$1.50 (p)
 Screen Charges: \$45 (V) per color

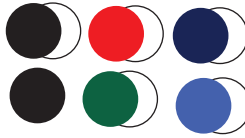
UMBRELLAS

SC-62 STORM CHASER UMBRELLA

Deluxe, vented golf umbrella with unique double-frame construction. Fiberglass shaft and ribs with feather light foam comfort grip. No sleeve. Top canopy sits 1" above the bottom canopy for maximum ventilation. Double hinge separates top and bottom.

- ▶ Colors: Black-Tan
- ▶ Dimensions: 62" Arc, 38.5" closed
- ▶ Imprint Area: on panel (1) 8" x 8"

QTY:	36	100	250	500	1000
	\$25.98	\$25.50	\$22.73	\$20.42	\$19.98
	2PQ2R				



NFI-62 FIBERGLASS SHAFT UMBRELLA

Golf umbrella with super-flex fiberglass ribs and shaft with golf grip handle, windproof spring and matching sleeve.

- ▶ Colors: Black-White, Red-White, Navy-White, Black, Hunter-White, Royal-White
- ▶ Dimensions: 62" Arc, 38.5" closed
- ▶ Imprint Area: on panel (1) 8" x 8" on sleeve (2) 10" x 1"

QTY:	36	100	250	500	1000
	\$17.98	\$17.50	\$15.45	\$13.75	\$13.32
	2PQ2R				

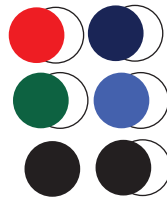


HU-62 THE HURRICANE

Vented double cover allows wind to pass through. Fiberglass shaft and ribs with golf grip handle and matching sleeve.

- ▶ Colors: Red-White, Navy-White, Black, Hunter-White, Royal-White, Black-White
- ▶ Dimensions: 62" Arc, 38.5" closed
- ▶ Imprint Area: on panel (1) 8" x 6" on sleeve (2) 10" x 1"

QTY:	36	100	250	500	1000
	\$23.98	\$23.00	\$19.98	\$17.50	\$16.65
	2PQ2R				



Price Includes:
One Color Imprint, One Location
Additional Imprint Colors \$1.50 (p)
Screen Charges: \$45 (V) per color

111 COOL BREEZE LOUNGER



Chair features mesh insert for optimal comfort and ventilation! Silver color frame and Nylon carry bag, 300 lb. capacity.

- ▶ Colors: Black, Lime, Orange, Pink, Red, Royal
- ▶ Dimensions: 20.5"W x 20.5"D x 35"H
- ▶ Imprint Area: 10" x 3" Inside or Outside Back

QTY:	36	100	250	500
	\$19.58	\$19.17	\$18.75	\$18.32
	4R			

105 BILLBOARD LOUNGER

The biggest imprint area in the industry! This is our best selling chair. Two drink holders and Nylon carry bag. 300 lb. capacity.

- ▶ Colors: Black, Red, Hunter, Navy, Tan, Royal
- ▶ Dimensions: 20.5"W x 18"D x 35"H
- ▶ Imprint Area: 10" x 10" Inside or Outside Back

QTY:	36	100	250	500
	\$18.32	\$17.92	\$17.50	\$16.65
	4R			



109 RACING LOUNGER

A unique design features a safety net in the back. Silver-colored finish on frame. Matching carry bag. Seat height: 18". Chrome frame and nylon carry bag. 300 lb. capacity. Racing blanket also available (not included).

- ▶ Colors: Black
- ▶ Dimensions: 20.5"W x 18"D x 36"H
- ▶ Imprint Areas: 10" x 5"H Inside or Outside Back

QTY:	36	100	250	500
	\$21.25	\$20.83	\$20.42	\$19.98
	4R			



115 LUAU LOUNGER

Low-slung with arm rests for down-to-earth comfort. Nylon carry bag. 300 lb. capacity.

- ▶ Colors: Red, Royal
- ▶ Dimensions: 20"W x 31"W x 12"H
- ▶ Imprint Area: 9.5" x 3" Front pad only

QTY:	36	100	250	500
	\$23.32	\$22.50	\$21.67	\$20.83
	4R			



Price Includes:
 One Color Imprint, One Location
 Additional Imprint Colors \$1.50 (p)
 Screen Charges: \$45 (V) per color

CHAIRS

116 BEACH CHAIR

Juicy colors to stand out on the beach with padded pillow and mesh insert. Comes with Nylon carry bag. 300 lb. capacity.

- ▶ Colors: Orange, Yellow, Lime, Red, Royal
- ▶ Dimensions: 22"W x 27"W x 9"H
- ▶ Imprint Area: 8" x 3" On Pillow



QTY:	36	100	250	500
	\$24.17	\$23.32	\$22.50	\$21.65
	4R			



9010 BEACH MAT

Authentic natural straw beach mat converts into easy carry tote. Wood button detail. Folds out to 36" wide! Nylon shell.

- ▶ Colors: Black, Red, Pink, Yellow, Lime, Orange, Royal
- ▶ Dimensions: 36"W x 72"L
- ▶ Imprint Area: 6" x 5" On Front Pocket

QTY:	36	100	250	500	1000
	\$7.08	\$6.50	\$6.17	\$6.00	\$5.83
	5R				



120 STADIUM CHAIR

Structured metal frame offers secure back support! Thick padding in seat and back, padded arm rests, and multiple pockets on front and back. 225 lb. capacity.

- ▶ Colors: Black, Red, Royal
- ▶ Dimensions: 18.5"W x 17.5"D x 17.5"H
- ▶ Imprint Area: 5.5" x 4.75" On Back Pocket

QTY:	36	100	250	500
	\$28.32	\$27.92	\$27.08	\$26.25
	4R			



9008 STADIUM CUSHION

This seat cushion is simply perfect. Front pocket holds programs, tickets, etc. Carry handle. Non-woven PP. 80 gsm.

- ▶ Colors: Black, Lime, Hunter, Navy, Orange, Red, Royal, Yellow
- ▶ Dimensions: 12" x 12" x .5"
- ▶ Imprint Area: 5.5" x 4.5" on Front Pocket (Max 1 Color)
- ▶ Heat Transfer Available for Multicolor Logos

QTY:	100	250	500	1000	2500
	\$2.17	\$2.00	\$1.83	\$1.75	\$1.65
	5R				

9007 STADIUM SEAT

Stadium seat with front organizer and insulated beverage pocket. Padded seat and back with adjustable strap support and large outside pocket.

- ▶ Colors: Black,
- ▶ Dimensions: 16.5"W x 15"D
- ▶ Imprint Areas: 6.5" x 6.5" Back Pocket
3" x 2.5" On Beverage Pocket

QTY:	36	100	250	500	1000
	\$14.98	\$14.58	\$14.17	\$13.75	\$13.32
	5R				

Price Includes:
One Color Imprint, One Location
Additional Imprint Colors \$1.50 (p)
Screen Charges: \$45 (V) per color

121 GAME DAY CHAIR



A look that's more dramatic for any sports fanatic! Whether you are tailgating before the big game or on the sideline at your child's soccer match, why not upgrade your seat to our Game Day chair? Its hourglass-shaped insert gives this chair a fresh new look that will warm your seat and turn some heads. 600D Poly Oxford. 300 lb. capacity

- ▶ Color: Red, Royal, Grey
- ▶ Dimensions: 21"W x 21"D x 35"H
- ▶ Imprint area: 8"W x 4"H front or back

QTY:	36	100	250	500
	\$19.98	\$19.58	\$19.17	\$18.32
	4R			

122 CAMO CHAIR

Camo, camo, everywhere; why not put it on a chair? A hunting/fishing sit about, or even just for hanging out! We know that camo is more than a preference for some, it is an obsession. We know you probably own a deer stand, so why not have a deer sit too? This chair is perfect for the great outdoorsmen in all of us. 600D Poly Oxford. 300 lb. capacity.



- ▶ Color: Camo
- ▶ Dimensions: 21.5"W x 21.5"D x 35"H
- ▶ Imprint area: 10"W x 5"H front or back

QTY:	36	100	250	500
	\$24.98	\$24.58	\$24.17	\$23.32
	4R			



123 CLUB CHAIR

Elevate your status by joining the Club! Upgrade your seat to this premium lounger, and you'll feel the extras right away. Extra roomy, extra padded, extra sturdy, extra sharp, and extra comfortable. 600D Poly Oxford. 300 lb. capacity.

- ▶ Color: Grey
- ▶ Dimensions: 35.5"W x 22"D x 39"H
- ▶ Imprint area: 10"W x 4.5"H front or back

QTY:	36	100	250	500
	\$47.50	\$46.65	\$45.83	\$44.98
	4R			

Price Includes:
 One Color Imprint, One Location
 Additional Imprint Colors \$1.50 (p)
 Screen Charges: \$45 (V) per color

119 CONTOUR CHAIR

Superfine mesh seat and back with 600D poly and chrome frame. Larger dimensions for extra comfort! Includes matching carry bag. 300 lb. capacity.



- ▶ Colors: Maroon, Olive, Orange
- ▶ Dimensions: 21.5"W x 21"D x 33.5"H
- ▶ Imprint Area: 10" x 3" Outside Back only

QTY:	36	100	250	500
	\$28.32	\$27.92	\$27.08	\$26.25
	4R			



118 THE CHAIRMAN

Aluminum frame and armrests make it strong, yet lightweight! Extra large size with deluxe Nylon and mesh insert with thick padding on seat and back. Side seat pocket with insulated beverage holder. Includes extra large matching carry bag in 600D Poly. 400 lb. capacity.

- ▶ Colors: Black
- ▶ Dimensions: 25.5" W x 22.5" D x 35" H
- ▶ Imprint Areas: On side pocket (1) 4" x 3" or on Chair Back (2) 8" x 3"

QTY:	12	36	100	250	500
	\$91.65	\$89.98	\$88.32	\$86.65	\$84.98
	5R				



112 PREMIUM LOUNGER

Premium folding camp chair. Heavy gauge aluminum frame, extra-wide, thick padded seat, insulated drink holder. 210D Poly black carry bag. Tailgating and camping. 400 lb. capacity.

- ▶ Colors: Blue
- ▶ Dimensions: 24"W x 22"D x 35"H
- ▶ Imprint Area: 12" x 6" Inside or Outside Back

QTY:	12	36	100	250	500
	\$51.65	\$50.83	\$49.98	\$49.17	\$48.32
	5R				



113 ELITE LOUNGER

Heavy gauge aluminum frame, extra tall, thick padded seat and headrest, insulated drink holder. Matching 210D Poly carry bag. 400 lb. capacity.

- ▶ Colors: Khaki
- ▶ Dimensions: 21.5"W x 19"D x 37"H
- ▶ Imprint Area: 11" x 4" Front or Back of Pillow. Front Limited to One Color Imprint

QTY:	12	36	100	250	500
	\$54.98	\$54.17	\$53.32	\$52.50	\$51.65
	5R				



Price Includes:
One Color Imprint, One Location
Additional Imprint Colors \$1.50 (p)
Screen Charges: \$45 (V) per color

ORDER INFORMATION

Blank Orders: EQP pricing on stock items. Catalog quantities will ship within 24 hours if received by 1pm. If "assembly" is requested for chairs (chair and pillow, if applicable, inserted into carry bags), please allow 48 hours.

Verbal orders: Not accepted.

Less-than Minimum: add \$50(V). Absolute minimum is half of first column quantity. Embroidered items – no less than minimum accepted.

Over/Under Runs: We always attempt to ship exact quantities. However, all orders are subject to a 5% over/under. Quantity shipped will be invoiced. EX-ACT quantity request will incur a \$30(V) charge. There is no charge for orders marked ONLY "No Over" or "No Under" but these orders risk being shipped under or over quantity ordered.

Cancellations: \$30(V) per order plus all other costs incurred up to the time of cancellation. Cancellations on orders already printed will not be accepted. All cancellations must be in writing.

Order Changes: Any changes made to an existing order after received at factory must be confirmed in writing via fax or email. Order changes may delay delivery.

Claims: Customer service must be notified of any quality issues regarding merchandise or imprint within 30 days of receipt of order. Returns must include a valid return authorization number. Blank merchandise is subject to a 20% restocking fee. No claim or return will be accepted or credited 30 days after shipment. Southern Plus will replace the goods or refund the purchase price for the merchandise at Southern Plus' discretion.

Co-op Programs: Call for details.

Production Time Stock Items: 5-7 business days on screen printed orders from receipt of art approval; standard catalog quantities. Allow additional 7 days for embroidery and heat transfers. Requests for faster delivery will be reviewed and confirmed if possible by customer service.

Rush Service: Free 24-Hour rush service available on select items. 3 day rush available on most screen printed items for \$62.50(V) charge. See full details on website.

Samples: Available at EQP plus shipping. Sample orders up to \$10(V) are no charge except shipping charges. Limit three (3) blank samples per item. Exclusions may apply. Samples may be blank or random.

Spec samples: EQP pricing plus regular set up charges. Call for pricing on items decorated with Heat Transfer, 4 Color Process and Embroidery.

Self-Promo: Most items available at EQP less 20%, max third column quantity. Normal setup charges apply. Exceptions apply. Contact customer service for full details. Copy must include distributor name and logo.

Acknowledgements: all printed orders will be acknowledged by fax or email. Please review carefully and confirm all details. Orders will not be released for production before receipt of approval.

Re-orders: If ordered within a year, screen charges will be waived. Re-orders must include original purchase order number and complete order information (product, quantity, logo name, etc) and copy of the artwork for verification.

Payments: Net 30 days upon credit approval. Payments not received by the due date are subject to a 1.5% per month late payment charge. First orders, custom orders and large orders may require a deposit or prepayment. Credit application is available on website or may be requested from customer service. We accept Visa, Mastercard or American Express at the time your order is placed. After orders have been shipped and invoiced we will no longer accept credit card payments. There will be a \$40(V) charge for checks returned due to NSF.

F.O.B. Point: Varies by product. GA, CA, SC, MA, WI, CO, NY.

ARTWORK & IMPRINT METHODS

Email to: artwork@southernplus.com. Must include PO#, Company Name, Your Name, Phone #, Item #.

Art Requirements: Adobe Illustrator or Photoshop in a format of AI, EPS, TIFF or PDF. Vectored art with fonts converted to curves. 600dpi or higher at 100% or larger. Black and White CAMERA READY. Art will be maxed out to our imprint area unless otherwise requested.

Recreating Artwork: \$40(V) per hour, one-hour minimum. Art charges are advised in advance. Typesetting is \$15(V) for straight type and \$25(V) for curved or font matching. One edit to artwork will be at no charge. Additional edits requested by customer will be charged \$10(V) per edit.

Imprint charges: Screen print - see product details in catalog. Heat Transfer – pricing based on size of logo. Please contact customer service for pricing.

Set up Charges: Screen charges for screen print - \$45(V) per color.

PMS Color Match: \$50(V). Exact color match is not guaranteed. PMS color match is not available on transfers.

Ink Color Change: \$25(V) per change, per screen.

Embroidery: See website for standard Madeira thread colors. Embroidery pricing for various products is available on website. Please allow additional minimum 7 days over standard production time.

PROOFS AND CONFIRMATIONS

Paper proof and order confirmation: Are sent via fax or email at no charge. Approval of artwork, pricing, product details and ship date is required before production is scheduled. Delays in approval may delay production. Proofs are sent on all orders and reorders unless otherwise requested on PO.

Rush Orders: proofs are waived.

Pre-Production Proof: \$20(V) plus regular charges (product, set-up, run charges).

Virtual Proofs: Available on website free of charge.

SHIPPING/PACKAGING

Shipping Methods: UPS, FedEx or truck line by request. USPS only available for APO addresses.

Truck Shipments: INSIDE DELIVERY must be noted on PO if no loading dock or unloading is required.

Packaging and shipping weights are approximate and available online at www.Southernplus.com.

Quantity Discrepancy: Any discrepancy in quantity received must be reported to carrier upon arrival and noted on shipping documents.

Drop Shipments: \$7.50(V) per additional address.

Third Party Carriers: \$8.75(V) pallet fee or \$2(V) per carton handling applies. If we ship on your account, you assume responsibility for the shipment from the time the order is ready for pickup.

Individual Item Packaging: For individual polybags add \$0.40(V) per item. Other individual or custom packaging available – please contact customer service for quote.

Insertions: Southern Plus will insert your items at a charge of \$0.50(V) per item (UPC labels, cards etc.). Subject to change based on type of insertion.

Special Shipping or Packaging: May require extra lead time. Instructions must be sent to Southern Plus prior to production.

Ship Date Estimate: Orders may ship BEFORE the requested ship date unless specifically stated on PO to not ship early.

MISCELLANEOUS

Product Safety: Our products are designed to meet all U.S. standards for product safety. Please visit the compliance page on our website to view product safety details.

Prop-65: All shipments to California will include a product warning label in accordance with Proposal 65.

General Disclaimer: All orders subject to product availability. Price, specifications and availability are subject to change without notice. Southern Plus cannot guarantee continuity of exact shade, color, size, weight, texture, or construction of finished goods. Check our web site at www.southernplus.com to confirm current pricing and product information.

We cannot be held liable for inaccurate information on third party websites or search engines. Photographs in this catalog or on website may not show true color or texture of product.

Trademark Usage: Logos shown in this catalog are for illustrative purposes only and do not imply endorsement and are not for sale except by authorized owner. We reserve the right to use all printing images in our advertising and displays unless otherwise notified in writing at the time of order.

Force Majeure: Southern Plus cannot be held responsible for delays in the performance or nonperformance caused by circumstances beyond our reasonable control, including but not limited to natural disasters, fire, war, government regulation, accident, strikes or labor problems, port congestion, customs inspections/holds, or shortages or inability to material, equipment or transportation.

SOUTHERN PLUS



www.SouthernPlus.com